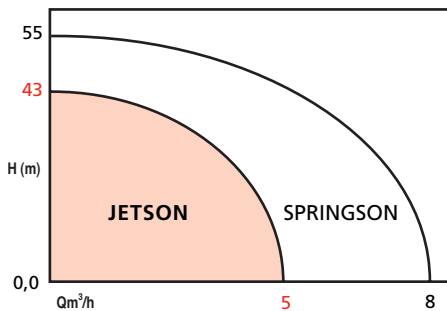


OPERATING LIMITS

Flow rates up to:	5 m ³ /h
Pressure head up to:	43 mCE
Max. service pressure:	6 bar
Max. water temperature:	+ 35°C
Max. ambient temperature:	+ 40°C
DN of ports:	G1
Max. suction height:	8 m



ADVANTAGES

- Complete stainless steel pump.
- Robust construction.
- Easy to install.
- Ready to pump.
- Easy to carry.
- Up to 100.000 Starts.
- Automatic self priming up to 8 meters.

JETSON

SELF PRIMING JET PUMP IN STAINLESS STEEL

4 Versions: standard, portable,
automatic, one pump booster
50 Hz

APPLICATIONS

- Distribution of clear water and rain water.
- Small-scale irrigation.
- Sprinkling.
- Pressure boosting.
- Washing.

• JETSON PAC
in automatic version



• Hydromini JETSON



• JETSON in portable version

DESIGN

•Hydraulic part

- Self priming jet pump with a venturi system.
- Axial suction and vertical discharge.
- Centrifugal.
- Stainless steel impeller (304 Stainless steel).
- Waterproofness between shaft and motor with mechanical seal.

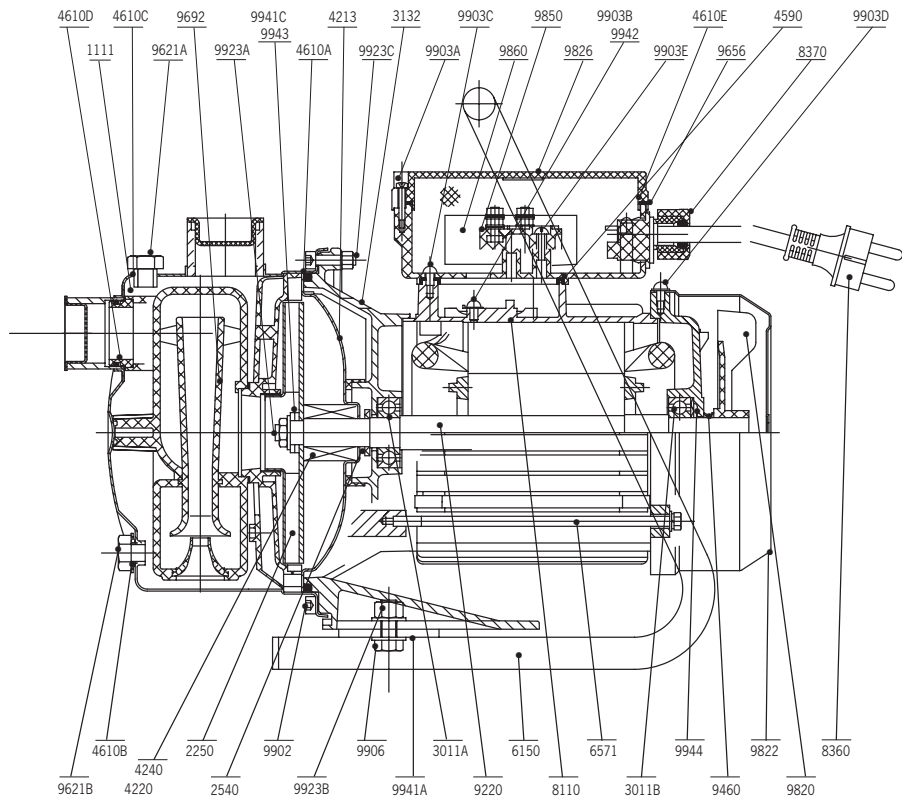
•Motor

- Dry motor 2 pole -Air ventilated.
 - Single phase : built in thermal protection with automatic reset.
 - Integrated capacitor in the control box.
- Rotation speed : 2900 rpm.
 Winding 1-phase : 230 V
 3-phase : 230 -400 V.
 Frequency : 50 Hz
 Insulating category : 130 (B)
 Protection index : IP 44
 EC Conformity : NF EN 60335-2-41

STANDARD CONSTRUCTION

Main parts	Materials
Housing	AISI 304 stainless steel
Impeller	AISI 304 stainless steel
Injector	Noryl GFN 20
Diffuser	Noryl GFN 20
Shaft	AISI 304 stainless steel
Mechanical seal	Graphite/Ceramic
O-ring NBR	

SECTIONAL DRAWING

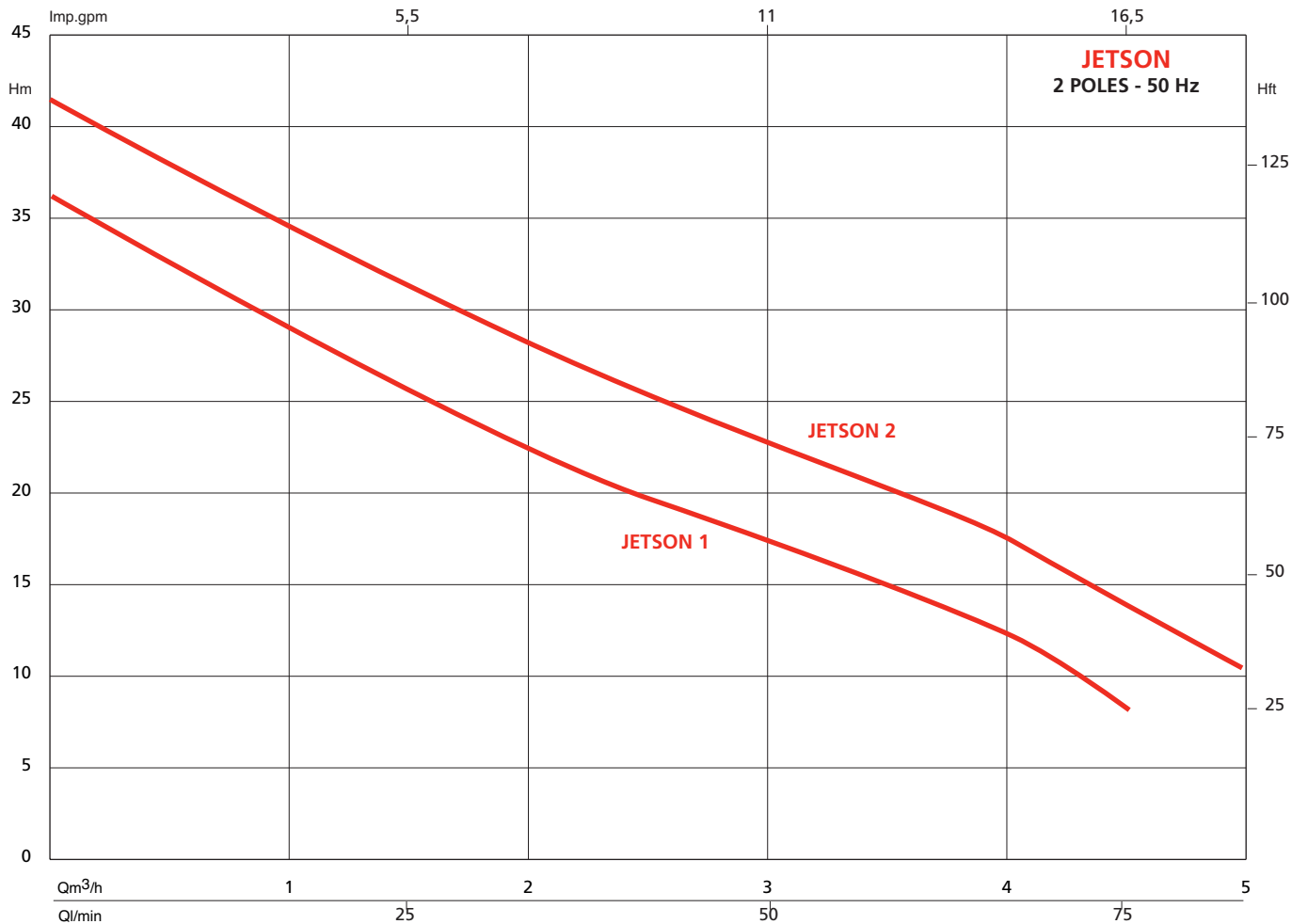


PARTSLIST

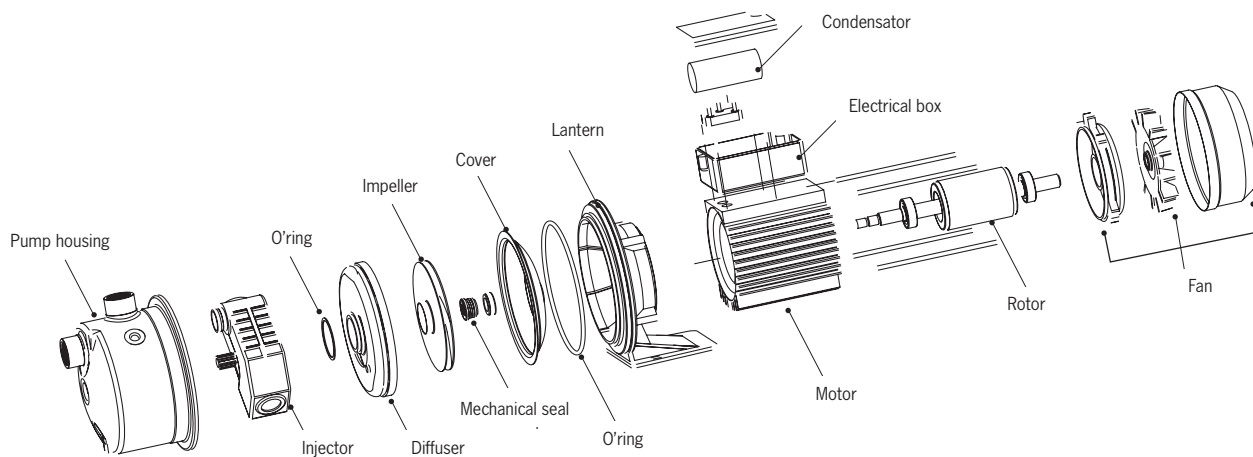
- 1111 - Pump body
- 2250 - Impeller
- 2540 - Deflector
- 3011A - Front ball bearing
- 3011B - Rear ball bearing
- 3132 - Bearing bracket lantern
- 4213 - Stationary ring
- 4220 - Rotary ring
- 4240 - Stationary ring
- 4590 - Terminal box gasket
- 4610A - Ring body holder
- 4610B - O-ring under 9621B
- 4610C - O-ring under 9621A
- 4610D - O-ringbody injector
- 4610E - O-ring top terminal box
- 6150 - Handle
- 6571 - Tie bolt
- 8110 - Motor casing with stator
- 8370 - Cable gland
- 9220 - Rotor shaft
- 9460 - Lip Ring
- 9621A - Filling plug
- 9621B - Drain plug
- 9692 - Injector
- 9820 - Fan
- 9822 - Fan cover
- 9826 - Terminal box
- 9850 - Terminal board
- 9860 - Capacitor
- 9902 - Body lantern fixing screw
- 9903A - Top terminal box fixing screw
- 9903B - Earth screw
- 9903C - Terminal fixing screw
- 9903D - Fan cover fixing screw
- 9903E - Terminal board fixing screw
- 9906 - Screw handle fixing
- 9923A - Impeller nut
- 9923B - Handle fixingnut
- 9923C - Body lantern fixing nut
- 9941A - Plain washer handle fixing
- 9941C - Plain washer impeller fixing
- 9942 - Serra ted lock washer under 9903
- 9943 - Single coil spring lock washer
- 9944 - Curved spring washer

(•) Recommended replacement parts

HYDRAULIC PERFORMANCES

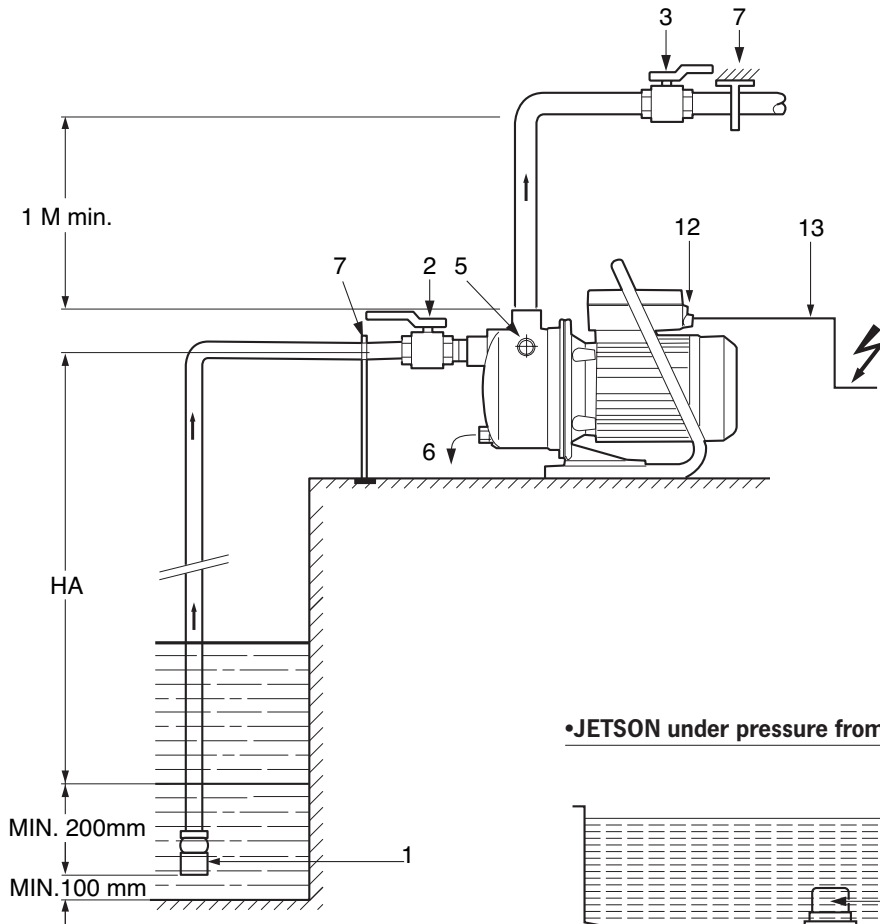


SPLIT VIEW

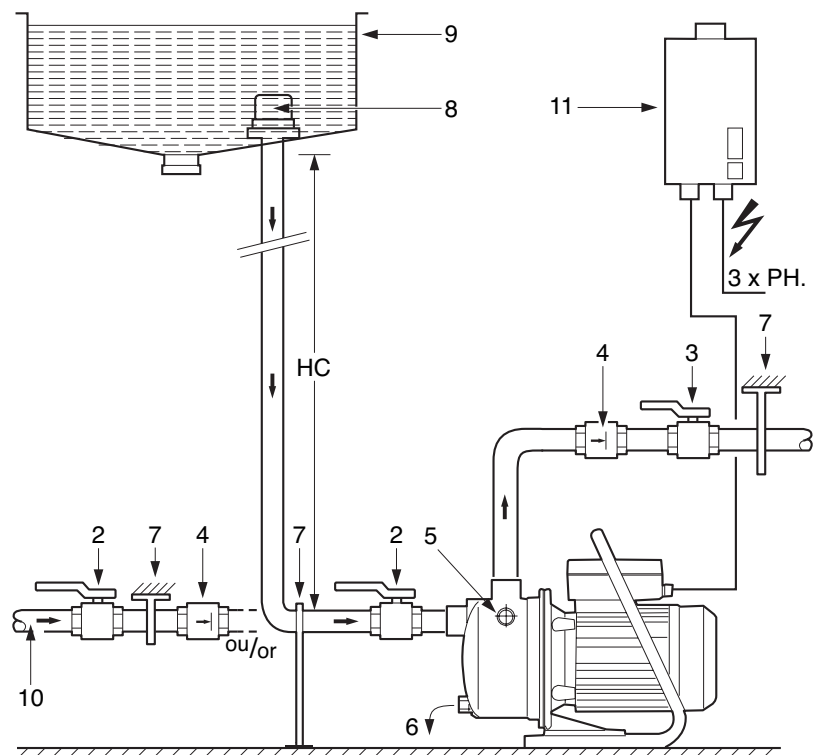


INSTALLATION DIAGRAMS - JETSON STANDARD

•JETSON in suction

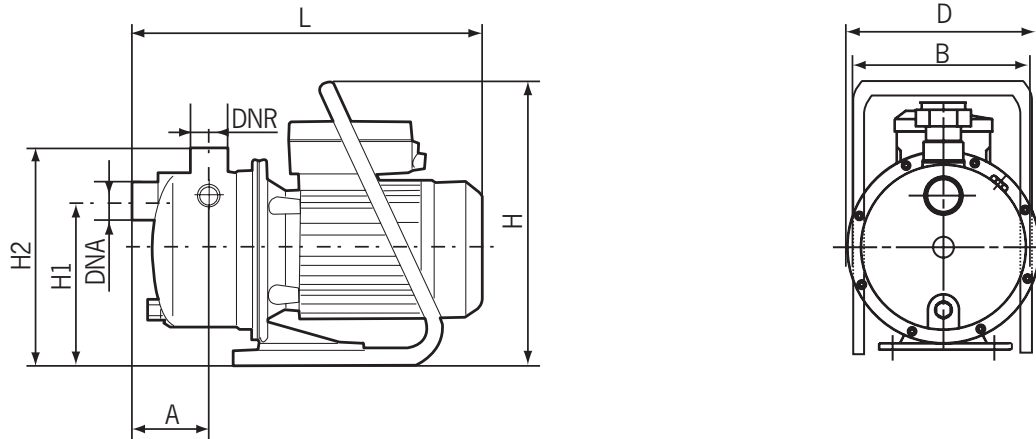


•JETSON under pressure from storage tank or town water supply

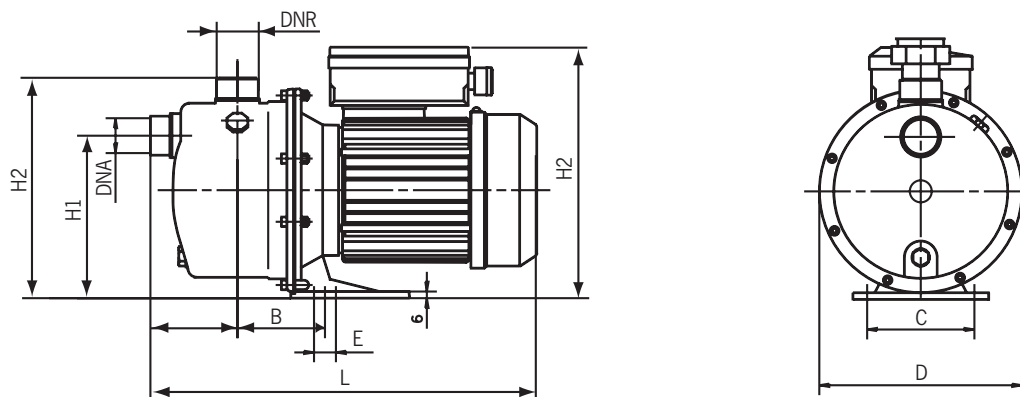


- 1- Foot valve/strainer (max. opening section 1mm)
- 2- Pump suction valve
- 3- Pump discharge valve
- 4- Non-return valve
- 5- Filling plug
- 6- Drain plug
- 7- Pipework support
- 8- Strainer
- 9- Storage tank
- 10- Mains network
- 11- Motor protection contactor three-phase
- 12- On/Off switch in single-phase (red indicator light)
- 13- Cable (with plug) in single-phase
- HA: Suction height
- HC: Flooded suction height

ELECTRICAL DATA AND DIMENSIONS



Type	A	B	H1	H2	H	D	L	DNA	DNR	Mass
JETSON-1-M-P	72	180	167,50	223	290	184	354	G1	G1	9,6
JETSON-2-M-P	72	180	167,50	223	290	184	354	G1	G1	10,6



Type	A	B	C	D	E	F	H	H1	H2	L	DNA	DNR	Mass
JETSON-1-M	72	83	98	184	20	10	200	147,50	212	354	G1	G1	8,9
JETSON-2-M/T	72	83	98	184	20	10	200	147,50	212	354	G1	G1	9,9

Type	MOTOR						POMPE
	Power		Current (A)			Capacitor	Mass
	P1 kW	P2 kW	MONO	TRI 230V	TRI 400 V	μ x 450 V	kg
Jetson -1-M	0,87	0,65	4,1	-	-	20	8,9
Jetson -2-M	1	0,75	4,58	-	-	20	9,9
Jetson -2-T	0,97	0,75	-	2,36	1,72	-	9,3
Jetson 1-M-P	0,87	0,65	4,1	-	-	20	9,6
Jetson 2 -M-P	1	0,75	4,58	-	-	20	10,6

JETSON PAC

ACSON INFORMATION

Automation

When a tap is opened, the system pressure drops and the pump starts instantly at a pre-set 15 bar. Factory preset.

This level can be increased up to 3 bar on site according to the public water supply pressure (or HA - suction height, HC - flooded suction height).

The pump continues to operate as long as there is a minimum flow rate in the system.

“Water hammer” prevention

When the tap is closing, the pump stops automatically after 3 or 5 seconds. This avoid the installation of a tank.

Dry running protection

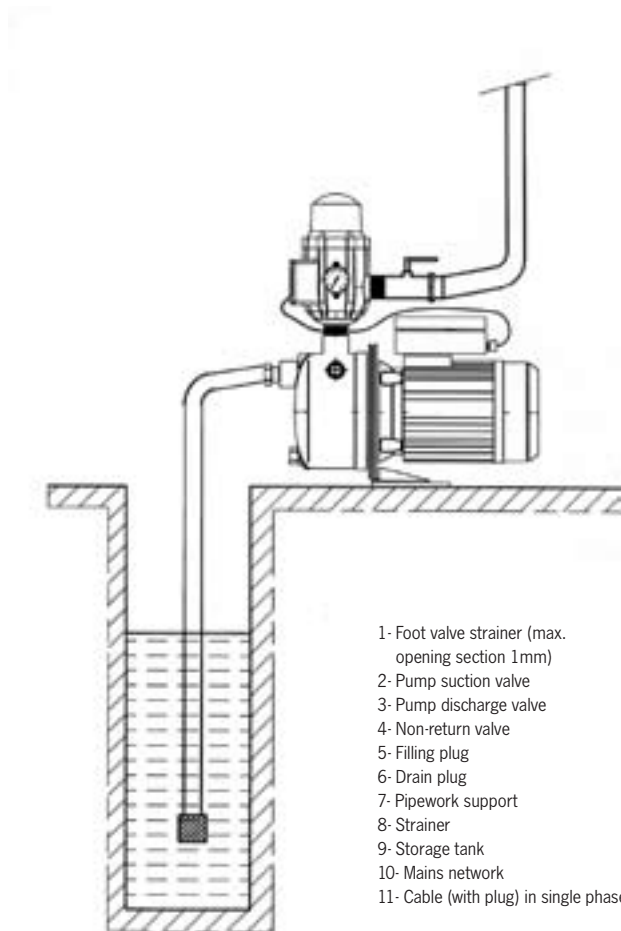
The controller protects the pump against dry running by shutting off the motor and activating the “Alarm” light. - Press “RESET” to restart pump. The use of the controller does not affect the pump characteristics: - Press the “RESET” bottom while priming, it will assure the self priming function.



• JETSON PAC Automation

INSTALLATION DIAGRAMS - JETSON PAC

• JETSON PAC in suction

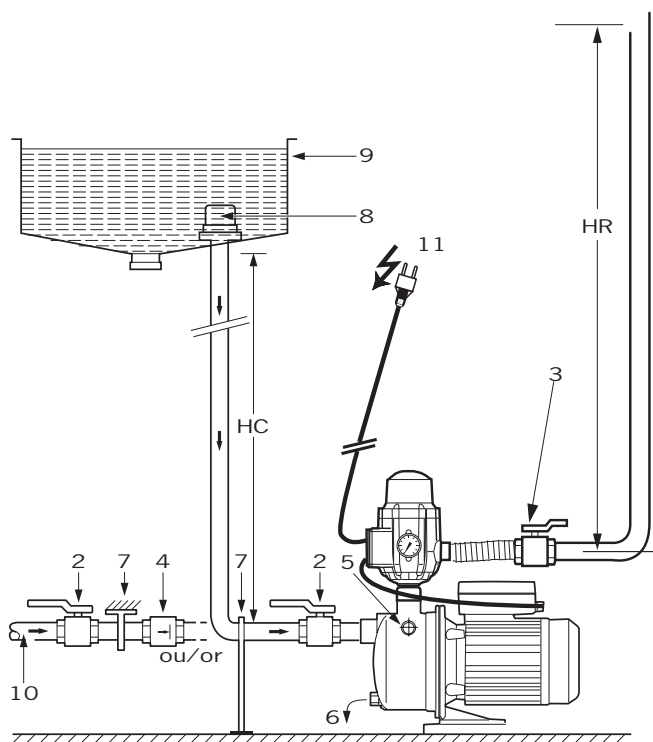


- 1- Foot valve strainer (max. opening section 1mm)
- 2- Pump suction valve
- 3- Pump discharge valve
- 4- Non-return valve
- 5- Filling plug
- 6- Drain plug
- 7- Pipework support
- 8- Strainer
- 9- Storage tank
- 10- Mains network
- 11- Cable (with plug) in single phase

HC: Suction height

HR: Flooded suction height

• JETSON PAC under pressure



CARACTÉRISTIQUES ELECTRIQUES ET DIMENSIONNELLES

Produit	MOTOR				PUMP									
	Power		Current	Capacitor	type	H	L	H1	H2	L1	L2	DVA	DNR	Mass
	P1	P2	MONO											
	kW	kW	A	$\mu \times 450 \text{ V}$	mm	mm	mm	mm	mm	mm	mm	mm	mm	kg
JETSON-PAC1-M	0,87	0,65	4,1	20	JETSON-1	460	354	148	226	72	83	1"	1"	10
JETSON-PAC2-M	1	0,75	4,58	20	JETSON-2	460	354	148	226	72	83	1"	1"	10

ACCESSORIES

STANDARD Version

- Suction kit.
- Isolating valve, foot valve strainer.
- Non-return valve.
- Bladder tank.
- Circuit breaker for three phase motor.



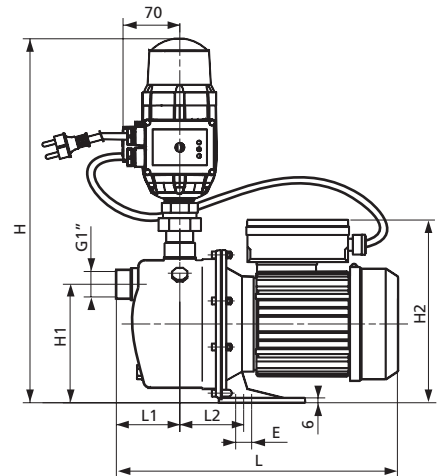
PAC Version

- Suction kit.
- Isolating valve.
- Foot valve strainer.



SUCTION KIT : STARKIT G1

- Suction kit with 7m long hose.
- Foot valve strainer.
- 2 connections suction/discharge.



FEATURES

a) Electrical

- Single-phase: 230 V - 50 Hz (M), with integral thermal protection, automatic resetting.
- Capacitor in the terminal box.
- Three-phase: 230-400 V - 50 Hz (T), motor protection essential through differential circuit breaker (standard version).

b) Installation

- Negative suction or under pressure installation, fixed or mobile.
- Installation of JETSON Pac under pressure only possible if the static pressure is ≤ 1.5 bar.
- Fixed installation: attached by 2 notches on the support spacer
- Mobile : need a suction pipe of the suction height > 4 m.
- Connection by hose with a reinforcement or by pipe.
- Strainer recommended (opening \varnothing 1mm).
- Foot valve strainer recommended for pump in suction.

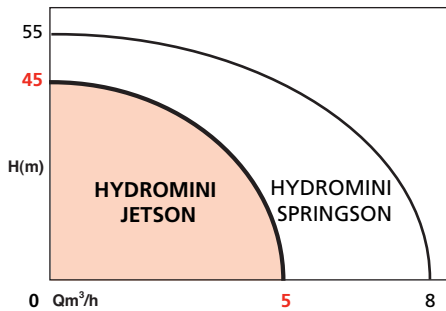
c) Packaging

- Ready to pump.
- Pressured with plug-in (single-phase only).
- Handle in option.
- On/Off switch on the single-phase standard version.

d) Maintenance

- Repair: see recommended spare parts (*) subject to wear.

HYDROMINI JETSON



APPLICATIONS

- Recommended for:
 - Domestic pressure boosting.
 - Drip watering.
 - Irrigation.

OPERATING LIMITS

Max. service pressure:	6 bar
Max. temperature:	35° C
Bladder tank:	10 bar

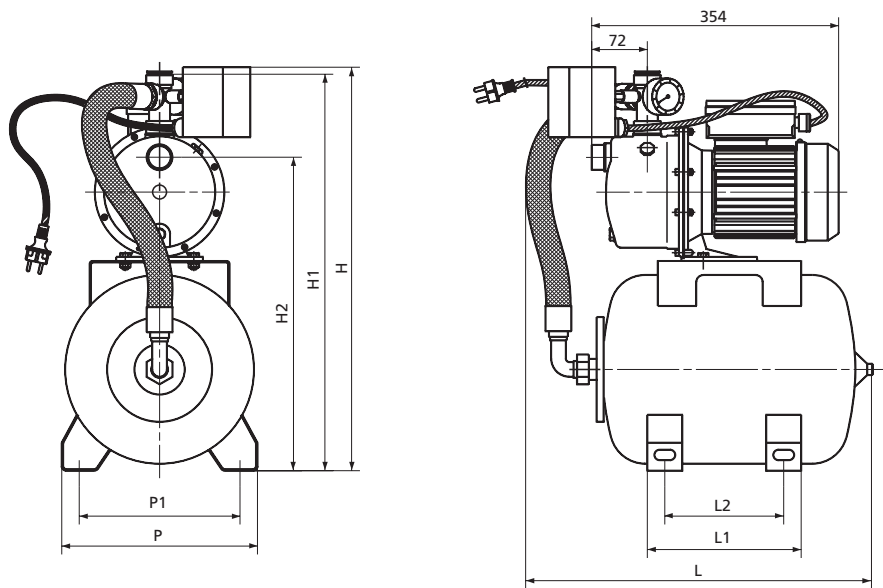
ADVANTAGES

- Booster pump fully assembled.
- Ready to install.
- 20 or 50l bladder tank
- Useful water reserve to avoid frequent starting of the pump
- Easy operation
- Easy maintenance at low cost.

•Hydromini jetson



DIMENSIONS



Type	H	H1	H2	L	L1	L2	P	P1
	mm	mm	mm	mm	mm	mm	mm	mm
JETSON-1-M-H20	580	570	450	500	220	170	280	230
JETSON-2-M-H20	580	570	448	500	220	170	280	230
JETSON-1-M-H50	670	660	530	700	350	300	360	280
JETSON-2-M-H50	670	660	530	700	350	300	360	280

RECOMMENDED ACCESSORIES HYDROMINI VERSION

• Non-return valve



• Isolating valve



• Foot valve strainer



• Suction kit

