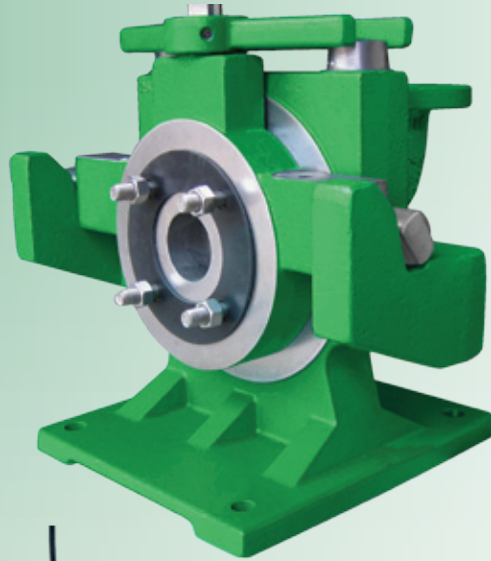




**Myers**<sup>®</sup>  
ENGINEERED PRODUCTS

# *MYERS 2-15 HP WG SERIES GRINDER PUMPS*



SRA Lift-out Package & Custom Control System

# SUBMERSIBLE GRINDER PUMPS



## WG20 & WGX20 SERIES



- Dual seal
- Packaged for use in Class 1, Group D hazardous locations (WGX20 model only)



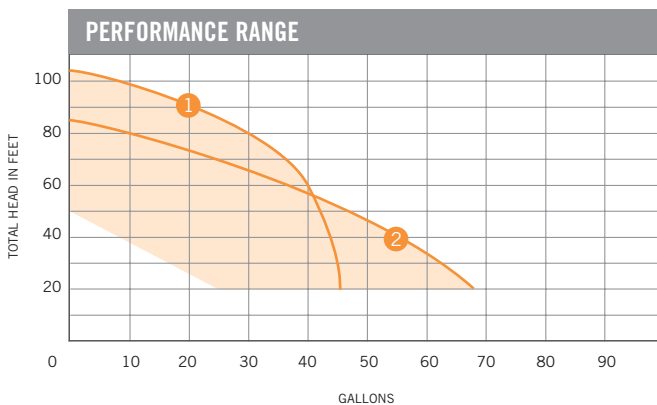
## WG30-50 & WGX30-50 SERIES



- Dual seal
- Packaged for use in Class 1, Group D hazardous locations

### WG20 GRINDER PUMP

- Heads to 105 feet and flows of 70 GPM. Standard or high flow designs.
- Recessed impeller provides steep non-overloading operating curve.
- Oil-filled motor for max. heat dissipation and constant bearing lubrication.
- Recessed impeller reduces radial bearing loads, increases bearing life.
- High torque capacitor starts single phase motor for assured starting under heavy load.
- Seal moisture sensor warns of leak condition, prevents costly motor damage.
- On-winding temperature-sensitive overload.
- Shredding ring and grinding impeller are replaceable without dismantling pump or motor.



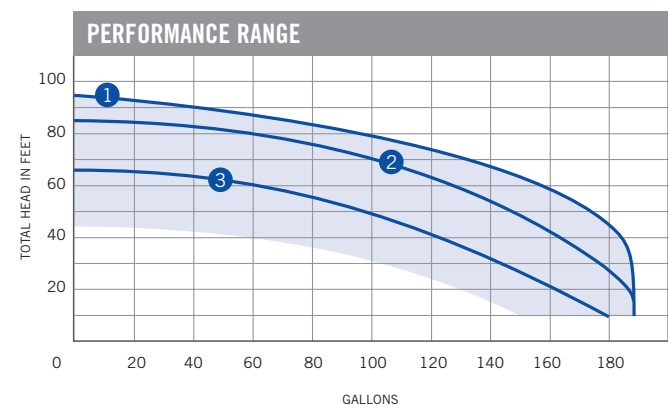
MODEL	HP	IMPELLER	RPM
① WG20	2	5.5"	3450
② WG20F	2	5.0"	3450

### WGX20 MODEL ONLY

- Optional explosion-proof rail package. Brass and nonsparking system using WG Series pump and SRA system.

### WG30-50 & WGX30-50 GRINDER PUMPS

- Heads to 92 feet and flows of 185 GPM.
- Recessed impeller provides steep non-overloading operating curve.
- Oil-filled motor for max. heat dissipation and constant bearing lubrication.
- Recessed impeller reduces radial bearing loads, increases bearing life.
- High torque capacitor starts single phase or three phase motors for assured starting under heavy load.
- Seal leak probe warns of leak condition, prevents costly motor damage.
- On-winding temperature-sensitive overload.
- Shredding ring and grinding impeller are replaceable without dismantling pump or motor.



MODEL	HP	IMPELLER	RPM
① WG50-WGX50	5	5.25"	3450
② WG50-WGX50	5	5"	3450
③ WG30-WGX30	3	4.5"	3450

**NOTE:** On single phase 5 HP pumps, do not exceed 5" diameter impeller. Other trims available upon request.

# SUBMERSIBLE GRINDER PUMPS



**Myers**  
ENGINEERED PRODUCTS



## WG30H-75H & WGX30H/50H/75H SERIES



- Dual seal
- Packaged for use in Class 1, Group D hazardous locations



## WG75HH/100H/150H SERIES



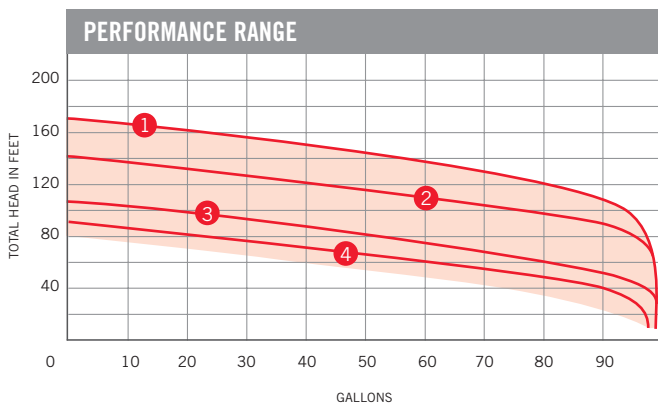
- Dual seal
- Packaged for use in Class 1, Group D hazardous locations

### WG30H/50H/75H & WGX30H/50H/75H GRINDER PUMPS

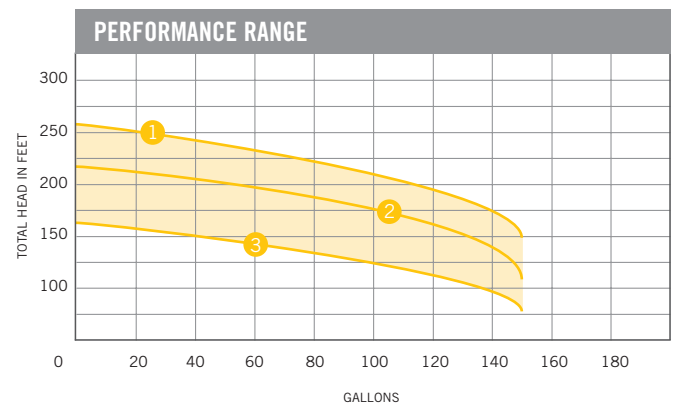
- Heads to 170 feet and flows of 98 GPM.
- Recessed impeller provides steep non-overloading operating curve.
- Oil-filled motor for max. heat dissipation and constant bearing lubrication.
- Recessed impeller reduces radial bearing loads, increases bearing life.
- High torque capacitor starts single phase or three phase motors for assured starting under heavy load.
- Seal leak probe warns of leak condition, prevents costly motor damage.
- On-winding temperature-sensitive overload.
- Shredding ring and impeller are replaceable without dismantling pump or motor.

### WG75HH/100H/150H GRINDER PUMPS

- Heads to 257 feet and flows of 150 GPM.
- Recessed impeller provides steep non-overloading operating curve.
- Oil-filled motor for max. heat dissipation and constant bearing lubrication.
- Recessed impeller reduces radial bearing loads, increases bearing life.
- High torque three phase motors for assured starting under heavy load.
- Seal leak probe warns of leak condition, prevents costly motor damage.
- On-winding temperature-sensitive overload.
- Shredding ring and impeller are replaceable without dismantling pump or motor.



	MODEL	HP	IMPELLER	RPM
1	WG75H	7.5	6.5"	3450
2	WG50H	5	6"	3450
3	WG30H 3Ø	3	5.25"	3450
4	WG30H 1Ø	3	5"	3450



	MODEL	HP	IMPELLER	RPM
1	WG150H	15	8"	3450
2	WG100H	10	7.38"	3450
3	WG75HH	7.5	6.5"	3450

## WG20 CENTRIFUGAL GRINDER PUMP

### CABLE ENTRY SYSTEM

Triple sealed cable system provides the best protection against water penetration

- Cable jacket sealed by compression grommet
- Moisture blocking connectors
- Individual wires sealed by epoxy potting

### HEAVY-DUTY CASTINGS

- High tensile strength
- Durable for extreme duty

### OIL-FILLED HOUSINGS

Motor and lower seal housings

- Highest efficiency for heat dissipation
- Permanent bearing and seal lubrication
- Prevents moisture entry, condensation
- Environmentally safe

### PREMIUM MOTOR

- Class F construction
- High efficiency
- VFD duty rated
- Overload protection
- Press fit for perfect alignment and heat transfer

### HEAT SENSOR

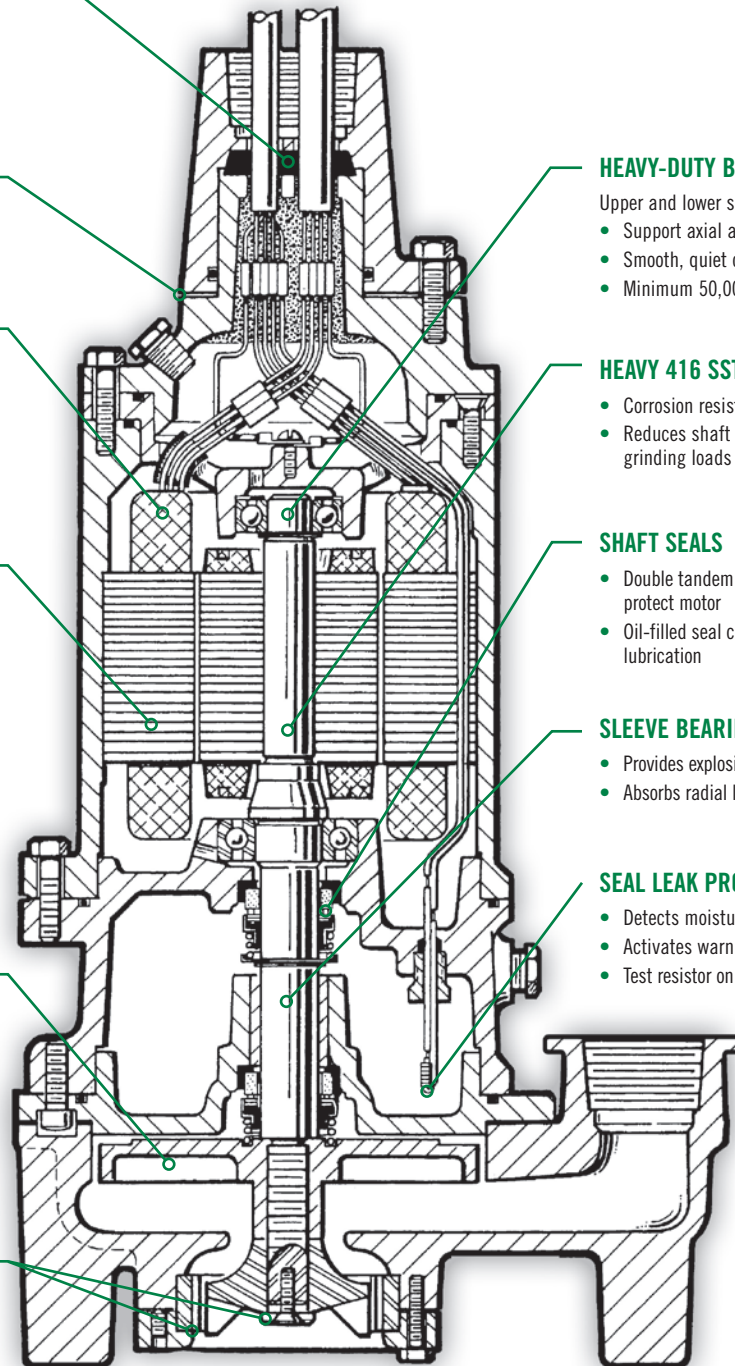
- Protects motor from burnout due to excessive heat from any overload condition
- Automatically resets when motor has cooled

### IMPELLER

- Bronze recessed impeller handles ground slurry without clogging or binding
- Provides unobstructed flow passage
- Reduces radial loads
- Pump-out vanes help keep trash from seal
- Reduces pressure at seal faces
- Dynamically balanced

### GRINDER ASSEMBLY

- 1.5 million cuts/minute
- Grinder impeller and shredding ring are replaceable without dismantling pump
- Constructed of 440 SST hardened to 58-60 Rockwell



### HEAVY-DUTY BALL BEARINGS

Upper and lower shaft support

- Support axial and radial loads
- Smooth, quiet operation
- Minimum 50,000 hour B10 life

### HEAVY 416 SST SHAFT

- Corrosion resistant
- Reduces shaft deflection due to grinding loads

### SHAFT SEALS

- Double tandem mechanical shaft seals protect motor
- Oil-filled seal chamber provides continuous lubrication

### SLEEVE BEARING

- Provides explosion-proof integrity
- Absorbs radial load

### SEAL LEAK PROBE

- Detects moisture in seal housing
- Activates warning light in control panel
- Test resistor on UL Listed models

# DESIGN FEATURES

## WG30-150H SUBMERSIBLE GRINDER PUMP

### CABLE ENTRY SYSTEM

Triple sealed cable system provides the best protection against water penetration

- Cable jacket sealed by compression grommet
- Moisture blocking connectors
- Individual wires sealed by epoxy potting

### HEAT SENSOR

- Protects motor from burnout due to excessive heat from any overload condition
- Automatically resets when motor has cooled

### HEAVY 416 SST SHAFT

- Corrosion resistant
- Reduces shaft deflection due to grinding loads

### SHAFT SEALS

- Double tandem mechanical shaft seals protect motor
- Oil-filled seal chamber provides continuous lubrication

### SEAL LEAK PROBE

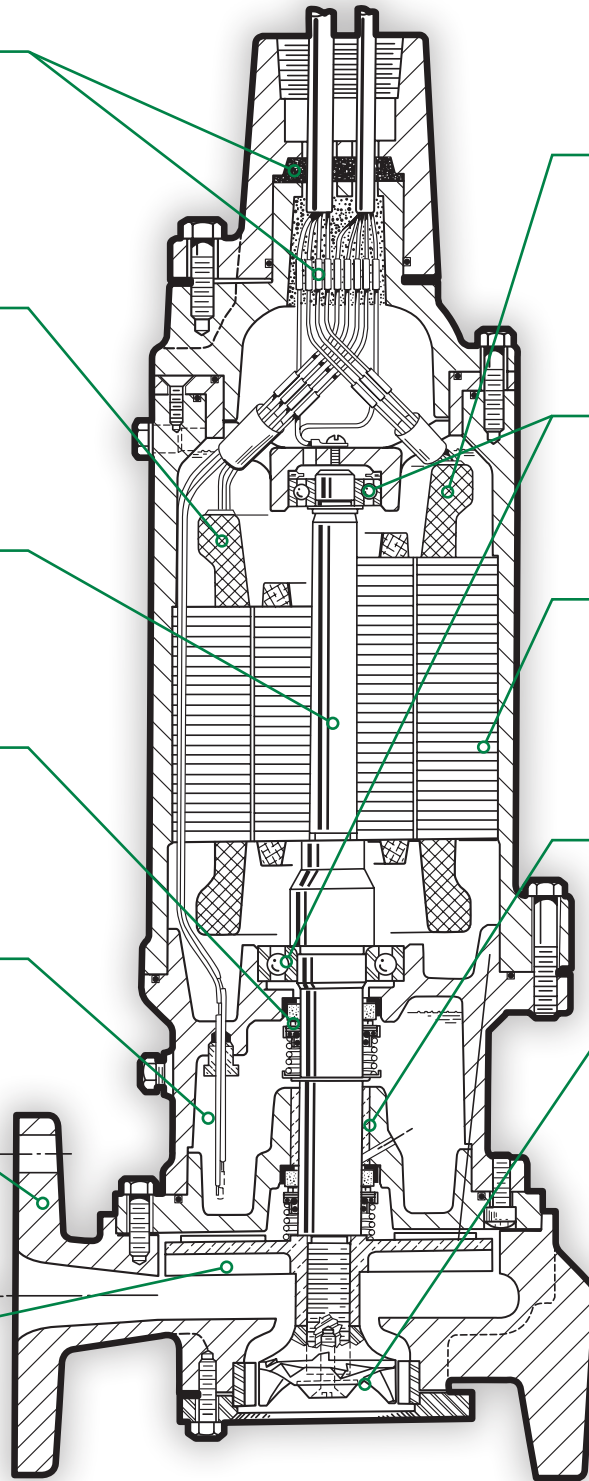
- Detects moisture in seal housing
- Activates warning light in control panel
- Test resistor on UL Listed models

### VOLUTE CASE

- Cast iron
- Horizontal discharge
- Drilled for 2.5 inch pipe flange

### IMPELLER

- Bronze recessed impeller handles ground slurry without clogging or binding
- Provides unobstructed flow passage
- Reduces radial loads
- Pump-out vanes help keep trash from seal
- Reduces pressure at seal faces
- Dynamically balanced



### OIL-FILLED HOUSINGS

Motor and lower seal housings

- Highest efficiency for heat dissipation
- Permanent bearing and seal lubrication
- Prevents moisture entry, condensation
- Environmentally safe

### HEAVY-DUTY BALL BEARINGS

Upper and lower shaft support

- Support axial and radial loads
- Smooth, quiet operation
- Minimum 50,000 hour B10 life

### PREMIUM MOTOR

- Class H construction
- High efficiency
- VFD duty rated
- Overload protection
- Press fit for perfect alignment and heat transfer

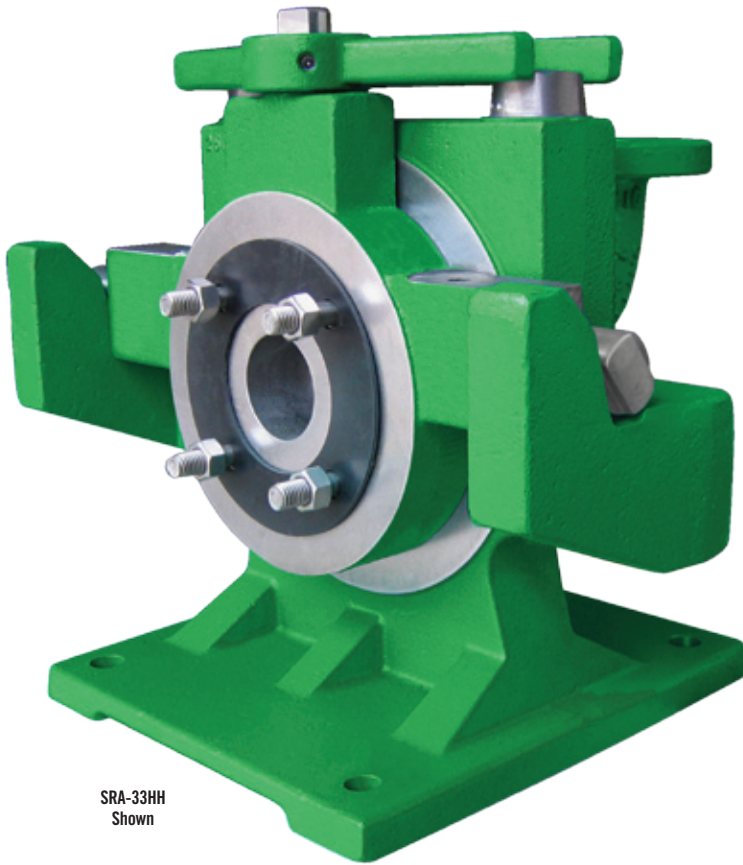
### SLEEVE BEARING

- Provides explosion-proof integrity
- Absorbs radial load

### GRINDER ASSEMBLY

- Grinder impeller and shredding ring are replaceable without dismantling pump
- Constructed of 440 SST hardened to 58-60 Rockwell

# SRA LIFT-OUT PACKAGES



SRA-33HH  
Shown

## SRA LIFT-OUT PACKAGES

Myers SRA Lift-Out package makes installation and service of grinder, sewage and effluent pumps safer and easier.

### LIFT-OUT PACKAGE OFFERS EASE OF SERVICE & REINSTALLATION

- Fast and easy pump removal
- No need for personnel to enter basin
- Offered with or without check valve (SRA-125CV only)
- Stainless steel brackets ensure parts will not corrode
- Positive machine fit with O-ring seal (SRA-125CV only)

### SYSTEM INCLUDES

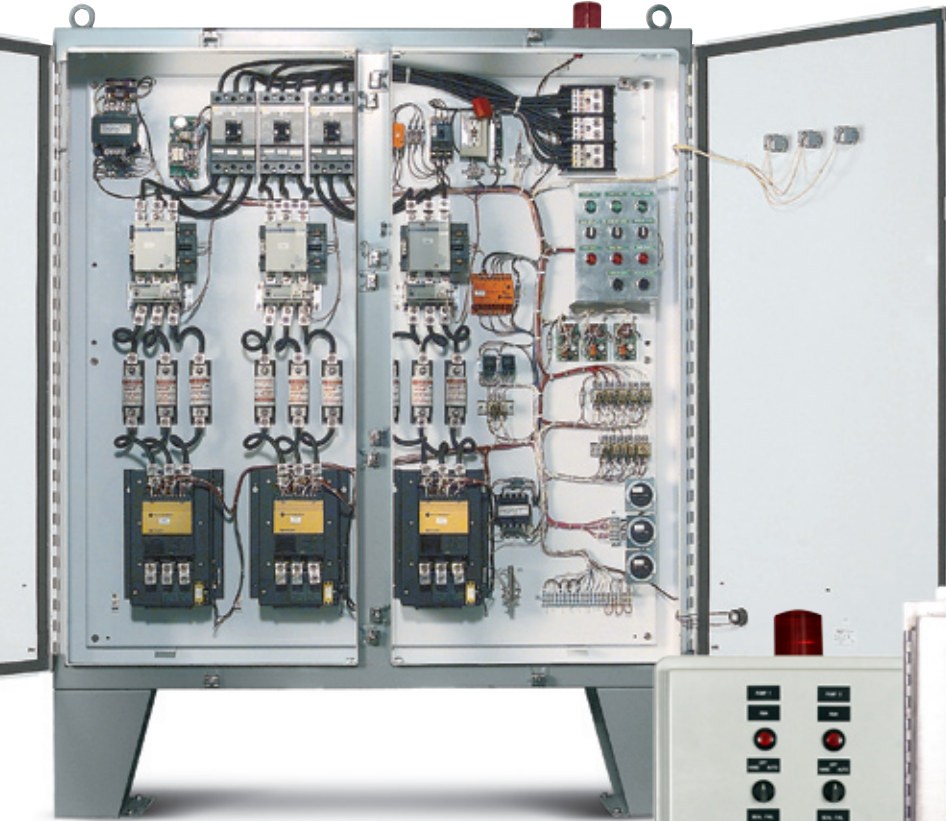
- Mounting base
- Lift-out elbow
- Check valve (SRA-125CV only)
- Guide plate
- Fasteners and O-rings

PART	SRA-125CV	SRA-33WG	SRA-33HH
Elbow Size	1.25" X 2"	2.5" X 3"	2.5" X 3"
Guide Plate	SST	SST	SST
Sealing Flange	Cast Iron**	Cast Iron**	Cast Iron**
Mounting Base	Cast Iron	Cast Iron	Cast Iron
Fasteners	SST	SST	SST
O-Ring	BUNA-N	N/A	N/A
Guide Rails*	1" SST	1.5" SST	2" SST
Top Rail Support*	TRS-100	TRS-150	TRS-2
Chain*	CP-75SST	CP-15SST	CP-20SST

\* Must be ordered separately

\*\* Nonsparking available for hazardous locations

# CONTROL PANELS



## WHY YOU SHOULD USE MYERS CUSTOM CONTROLS

- Quality product, leading in design, construction and engineering
- Quick delivery with virtually unlimited options
- Each control panel is custom built and individually tested for customer satisfaction
- Optimized for submersible pumps up to 125 HP
- Extensive capabilities with a wide range of features and options
- Enclosures available in Simplex / Duplex / 230 volt single phase / 208-230 and 460 volt three phase

## ENCLOSURE OPTIONS

- NEMA 3R (Painted Steel)
- NEMA 3R (Stainless Steel)
- 4X (Fiberglass)
- 4X (Stainless Steel)



## STANDARD FEATURES

- Enclosure with lockable hasp
- Motor, control, and alarm circuit breakers
- IEC rated motor starter with adjustable overload relay
- Pump run light (NEMA 4X)
- Hand-off-auto selector switch (NEMA 4X)
- Red alarm light (NEMA 4X)
- Motor thermoprotection circuit
- Terminal strip
- Schematic laminated to enclosure door
- Terminals to connect off / on / high water floats (Simplex) off / lag lead / high water floats (Duplex)
- Duplex alternator with lead pump selector
- UL 508A labeling

## OPTIONAL FEATURES

- NEMA rated starters
- Motor seal fail and indicator light circuit (required on all dual seal pumps to maintain warranty where applicable)
- Dim glow power and/or flash alarm light
- Alarm test circuit
- Elapsed time meter
- Cycle counters
- Audible alarm silence circuit
- Anti-condensate heater with integral thermostat
- Auxiliary alarm contact
- Lightning arrestor
- Alternative level controls
- Variable frequency drives
  - adjustable pump performance
  - liquid level control
- Telemetry
- Programmable controllers
- Multiple pump alternation
- Soft start
- Intrinsically safe controls
- UL 698A labeling
- Other options available upon request

**F.E. MYERS** warrants that its products are free from defects in material and workmanship for a period of twelve (12) months from the date of purchase or eighteen (18) months from the date of manufacture, whichever occurs first.

During the warranty period and subject to the conditions hereinafter set forth, **MYERS**, will repair or replace to the original user or consumer parts which prove defective due to defective materials or workmanship of **MYERS**. Contact the nearest authorized **MYERS** distributor, **MYERS** authorized service center or **MYERS** for warranty service. At all times, **MYERS** shall have and possess the sole right and option to determine whether to repair or replace defective equipment, parts or components.

Start up reports and electrical system schematics may be required to support warranty claims. Warranty is effective only if **MYERS** supplied or authorized control panels are used, where applicable. All dual seal pumps must have seal failure and heat sensors attached, functional and monitored for the warranty to be in effect. If a seal failure should occur, **MYERS** will only cover the lower seal and labor thereof. If the heat sensor and seal fail sensor is not attached and functional, the warranty is void.

**LABOR, ETC. COSTS:** **MYERS** shall in NO EVENT be responsible or liable for the cost of field labor, removal and/or reinstallation charges of any **MYERS** product, part or component thereof, or the expense of freight.

**THIS WARRANTY WILL NOT APPLY:** (a) to defects or malfunctions resulting from failure to properly install, operate or maintain the unit in accordance with printed instructions provided; (b) to failures resulting from abuse, accident or negligence; (c) to normal maintenance services and the parts used in connection with such service; (d) to units which are not installed in accordance with applicable local codes, ordinances and good trade practices; or (e) if the unit is moved from its original installation location; (f) unit is used for purposes other than for what it was designed and manufactured; (g) to any unit which has been repaired or altered by anyone other than **MYERS**, a **MYERS** distributor or a **MYERS** authorized service center and (h) to any unit which has been repaired using non factory specified parts/OEM parts.

**RETURN OR REPLACED COMPONENTS:** any item to be replaced under this Warranty must be returned to **MYERS** in Ashland, Ohio, or such other place as **MYERS** may designate, freight prepaid.

**PRODUCT IMPROVEMENTS:** **MYERS** reserves the right to change or improve its products or any portions thereof without being obligated to provide such a change or improvement for units sold and/or shipped prior to such a change or improvement.

**WARRANTY EXCLUSIONS:** **MYERS** MAKES NO EXPRESS OR IMPLIED WARRANTIES WHICH EXTEND BEYOND THE DESCRIPTION ON THE FACE HEREOF. **MYERS** SPECIFICALLY DISCLAIMS THE IMPLIED WARRANTIES OF MERCHANTABILITY AND FITNESS FOR ANY PARTICULAR PURPOSE.

Some states do not permit some or all of the above warranty limitations and, therefore, such limitations may not apply to you. No warranties or representations at any time made by any representatives of **MYERS** shall vary or expand the provision hereof.

**LIABILITY LIMITATION:** IN NO EVENT SHALL **MYERS** BE LIABLE OR RESPONSIBLE FOR CONSEQUENTIAL, INCIDENTAL OR SPECIAL DAMAGES RESULTING FROM OR RELATED IN ANY MANNER TO ANY **MYERS** PRODUCT OR PARTS THEREOF. PERSONAL INJURY AND/OR PROPERTY DAMAGE MAY RESULT FROM IMPROPER INSTALLATION. **MYERS** DISCLAIMS ALL LIABILITY, INCLUDING LIABILITY UNDER THIS WARRANTY, FOR IMPROPER INSTALLATION -- **MYERS** RECOMMENDS INSTALLATION BY PROFESSIONALS.

Some states do not allow the exclusion or limitation of incidental or consequential damages, so the above limitation or exclusion may not apply to you.

This Warranty gives you specific legal rights and you may also have other rights which vary from state to state.

In the absence of suitable proof of this purchase date, the effective date of this warranty will be based upon the date of manufacture.



1101 Myers Parkway  
Ashland, Ohio 44805

Tel: (419) 289-1144  
Fax: (419) 289-6658

269 Trillium Drive  
Kitchener, Ontario  
Canada N2G 4W5

Tel: (519) 748-5470  
Fax: (519) 748-2553

[www.femyers.com](http://www.femyers.com)