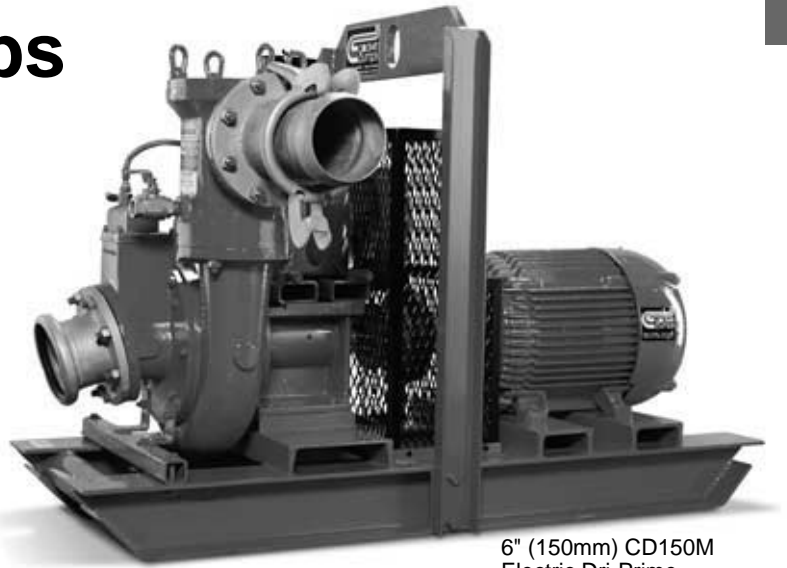
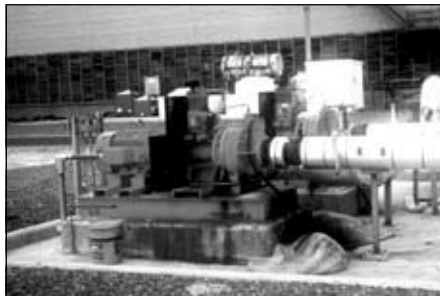


Electric Drive Dri-Prime® Pumps



6" (150mm) CD150M
Electric Dri-Prime

For maximum performance, choose an electric drive Godwin automatic self-priming Dri-Prime pump. Designed for long lasting durability, the electric drive Dri-Prime pump is ideally suited for both temporary pumping and permanent installations. Perfect for industrial and municipal applications, a permanently installed electric drive Dri-Prime pump will provide reliable, continuous pumping and reduced operating and maintenance costs. Or for temporary jobs where refueling is difficult, an electric drive Dri-Prime pump is the solution. Plus, electric drive Dri-Prime pumps can be customized using a wide range of speeds and impeller trims in the CD (solids-handling, medium head) or HL (high head) ranges of the Dri-Prime pump series.



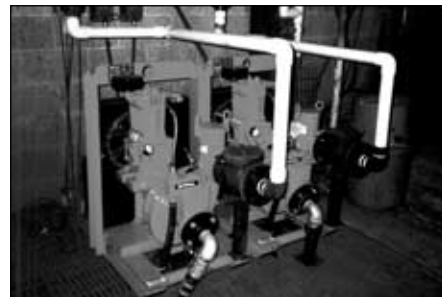
Industrial Storm Water Sump –
Permanent installation of two 6" (150mm)
HL5M electric drive Dri-Prime pumps



API Separator Sludge Removal –
Permanent installation of two 6" (150mm)
CD150M electric drive Dri-Prime pumps



Wastewater Treatment Plant
Bypass Project – Temporary installation
of twelve 12" (300mm) DPC300
electric drive Dri-Prime pumps

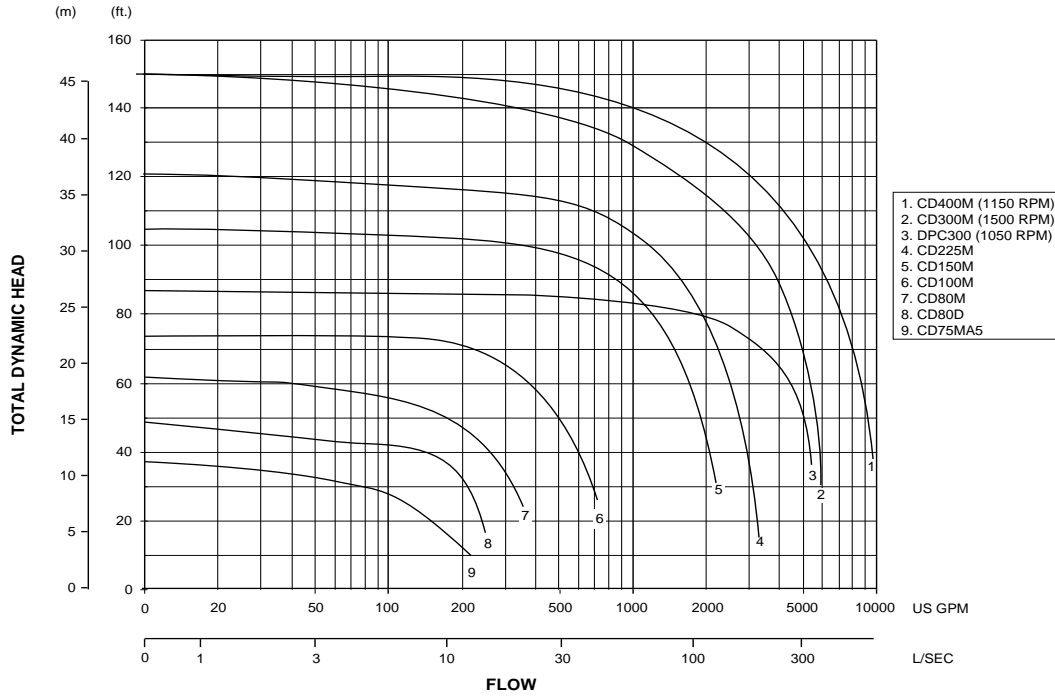


Industrial Wastewater Management –
Permanent installation of two 3" (75mm)
CD80M electric drive Dri-Prime pumps

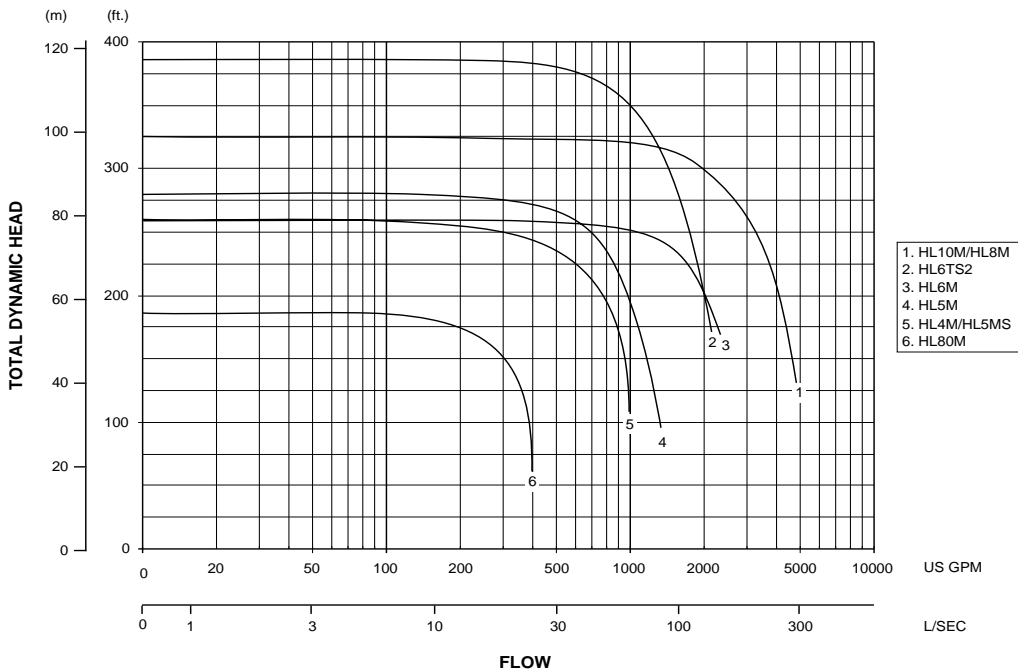
godwin
pumps



CD Series Dri-Prime® Electric Pump Performance Curve (1800 RPM)



HL Series Dri-Prime® Electric Pump Performance Curve (1800 RPM)



Composite curves are for comparison purposes only.
Consult engineering data for exact flow and head capabilities.

CORPORATE OFFICES: One Floodgate Road, Bridgeport, NJ 08014, USA • (856) 467-3636 • Fax: (856) 467-4841
Quenington, Cirencester, Glos. GL7 5BX, UK • Tel: +44 (0)1285-750271 • Fax: +44 (0)1285-750352
E-mail: sales@godwinpumps.com • www.godwinpumps.com

LOCATIONS: Norwich, CT • Buffalo, NY • Chicago, IL • Washington, DC • Richmond, VA
Virginia Beach, VA • Charleston, WV • N. Charleston, SC • Raleigh, NC • Charlotte, NC
Atlanta, GA • Houston, TX • San Antonio, TX • Helena, MT • Los Angeles, CA

