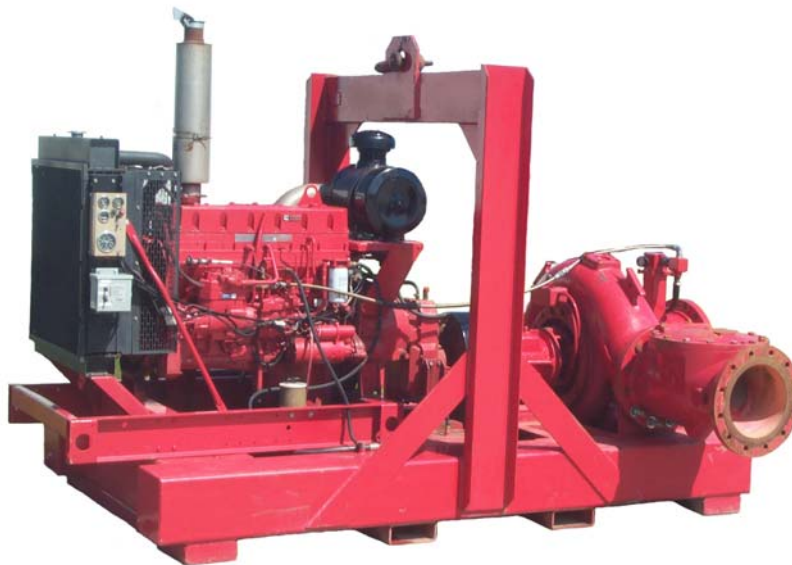




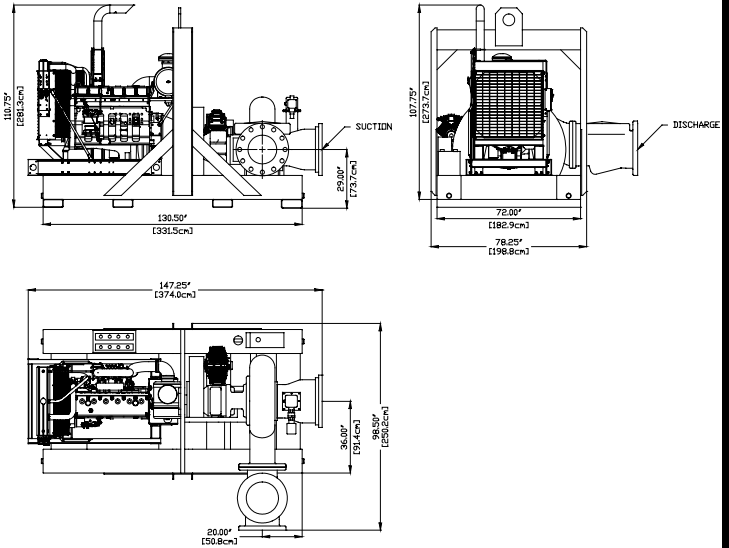
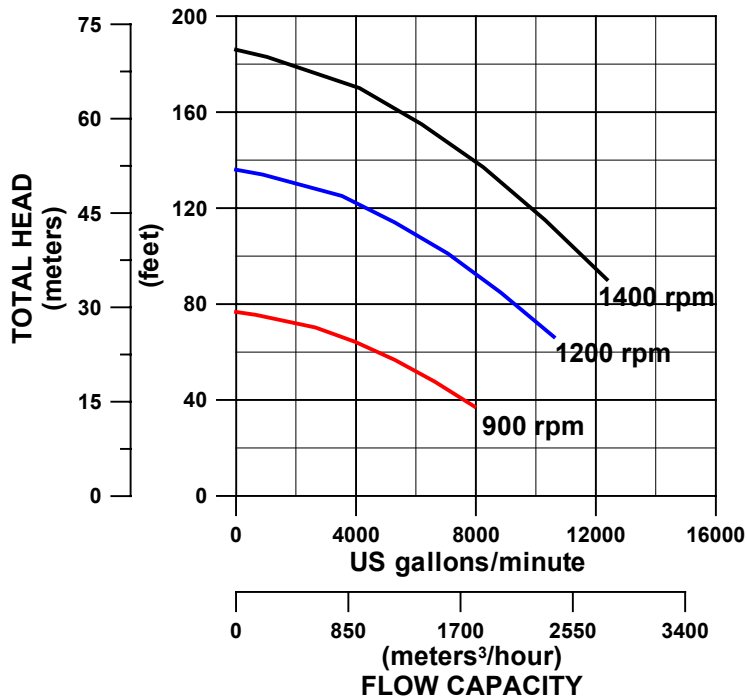
## 18" TRASH AUTO PRIME PUMP



The Global 18" Trash Auto Prime is a completely automatic self-priming 18" pump capable of achieving maximum flows of 12339 US gallons per minute (2800.95m<sup>3</sup> per hour) and 186 feet (56.73 m) total head, while handling solids up to 4" (101.6 mm) in diameter. The 18TAP is available with a variety of engine options including electric motors. To further increase the dependability of the complete package, the pump is coupled to the engine through a torsional damper. The damper, designed to isolate vibrations between the pump and engine, minimizes the effects of shock loading.

### Features

- ❑ The engine and pump are coupled through a reduction gearbox, which allows them to run within their most efficient speed ranges. Thus maximizing performance, while reducing total running costs
- ❑ The engine mounted compressor, used to power the automatic priming system, is plumbed into both the engine's oil and coolant systems for greater reliability
- ❑ The enclosed engine control panel features preset emergency shutdown protection against low oil pressure and high coolant temperature
- ❑ The pump's mechanical seal and oil bath allow it to be run dry for prolonged periods
- ❑ The automatic priming system along with the pump's mechanical seal allow the pump to be run in situations which may cause the pump to lose its prime
- ❑ Both the impeller and suction cover are fitted with renewable axial clearance wear rings
- ❑ The non-return valve is intended to allow 100% flow area without restriction, resulting in minimal head loss and clog free operation. The valve also features a minimal water hammer design and high reliability by using only a single moving part
- ❑ Compact design with an integral 252 US gallon fuel tank (953.82 liters)
- ❑ Though the standard package provides an effective solution, complete customization is available to meet a client's specific needs
- ❑ Sound absorbent acoustic enclosure option is available for use in noise sensitive areas



## Specifications

- ❑ **Maximum Engine Operating Speed:** 2200 rpm
- ❑ **Maximum Operating Temperature:** 212°F (100°C)
- ❑ **Solids Handling Capability:** 4" (101.6 mm) diameter using standard impeller
- ❑ **Fuel Consumption:** Approximately 14 US gallons per hour (52.99 liters per hour) @ 1800 rpm
- ❑ **Integral Fuel Tank Capacity:** 252 US gallons (953.82 liters), providing 18 hours of running time
- ❑ **Flange Connections:** 18" (457.2 mm) diameter

## Materials

- ❑ **Pump Casing, Suction Cover, Impeller and Wear Rings:** ASTM A48 Class 30 Cast Iron
- ❑ **Pump Drive Shaft:** Stress Proof Equalized MOD SAE 1144 Steel
- ❑ **Mechanical Seal:** Tungsten Carbide On Silicon Carbide
- ❑ **Chassis:** ASTM A36 Steel
- ❑ **Environmental Box:** ASTM A500 Grade B Steel
- ❑ **Non-Return Valve Body and Cover:** ASTM A126 Class B Cast Iron

## Pumps: Sales, Parts & Service



### Global Pump Company

10162 East Coldwater Road, Davison, MI 48423  
 Tel: (810) 653-4828 Fax: (810) 653-7828

[www.globalpump.com](http://www.globalpump.com)