



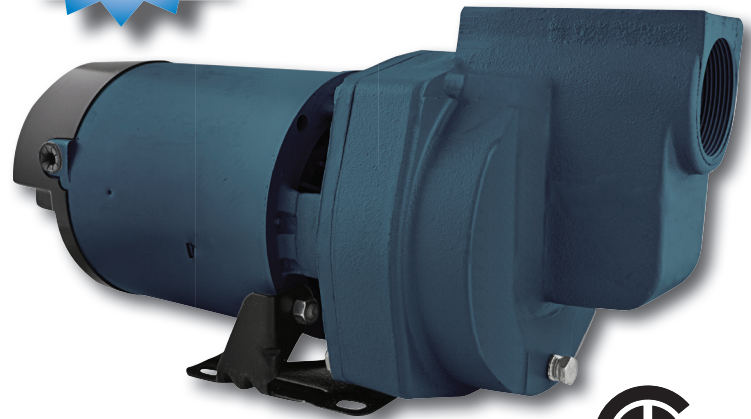
FLINT & WALLING

Zoeller Family of Water Solutions

Lawn Sprinkling Pumps

SP SELF-PRIMING 1, 1-1/2 AND 2 HP LAWN SPRINKLING / IRRIGATION PUMPS

- Quick self-priming operation for lawn irrigation
- Flint & Walling's Service Plus capacitor start, ball bearing motor for continuous operation.
- Heavy-duty cast-iron construction
- 115/230 Dual voltage motor
- Easy access drain plug
- 2 in. suction pipe / 1-1/2 in. discharge pipe



Model #	HP	Suction Lift (Ft.)	Capacity - U.S. Gallons per Minute Discharge Pressure (PSI)						Shut Off Pressure @ 0 Lift (PSI)	Suction Pipe	Discharge Pipe
			15	20	25	30	35	40			
SP10P1	1	10	57	52	45	35	20	0	39	2 in.	1-1/2 in.
		15	47	44	37	30	10	0			
		20	44	42	36	25	8	0			
		25	24	23	22	17	5	0			
SP15P1	1-1/2	10	66	58	53	42	32	10	42	2 in.	1-1/2 in.
		15	62	57	47	38	25	7			
		20	54	52	42	31	13	3			
		25	40	38	36	23	12	0			
SP20P1	2	10	67	62	56	49	39	27	44	2 in.	1-1/2 in.
		15	63	59	52	44	34	25			
		20	59	56	49	40	29	9			
		25	37	36	35	31	18	5			