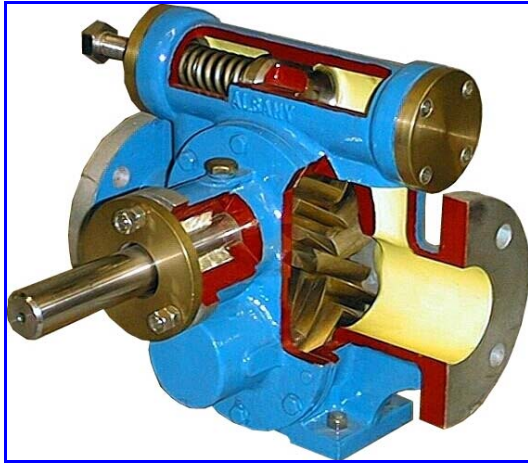


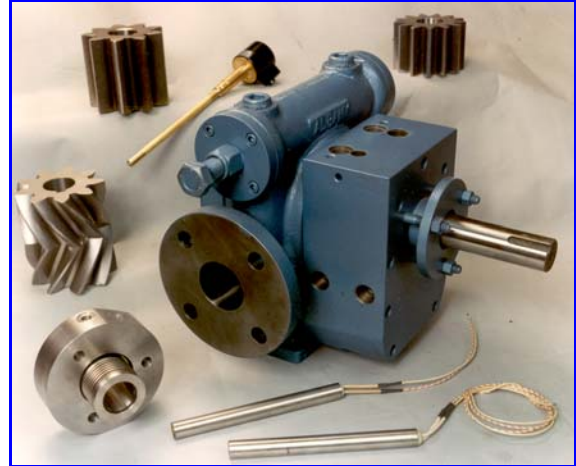


Albany Pumps

Bitumen & Bitumen Emulsions



Standard gear pumps for applications when pump is immersed in bitumen or heated by bitumen or diesel engine exhaust gas (fitted in a hot box).



Modular pumps with electric heating system or with facilities for thermal oil heating

Features

- Standard pumps are suitable for temperatures up to 250°C, and pressures up to 100 psi (7 BAR)
- Construction - cast iron casings, hardened steel shafts, packed glands
- Pump inlet and outlet connections to suit individual requirements. DIN PN16 is standard.
- Relief valve are fitted to standard pumps
- High temperature - above 200°C, steel casings are supplied at customers' request and are standard above 250°C
- Special high temperature bearing material is used.
- Gland packing selected to suit application.

Capacity Table

Pump size	Flow in l/m	kW	Flow in l/m	kW	Pump branch size
	at 720 RPM		at 960 RPM		
AP9	115	2.2	156	3	1½"
AP10	136	3	187	4	1½"
HD3	197	4	255	5.5	1½"
HD4	276	5.5	340	5.5	2"
HD5	349	7.5	400	7.5	2½"
HD6	472	7.5	630	11	3"
HD7 DH	581	11	700	11	3"
HD8 DH	717	11	950	15	4"
HD10 DH	948	18.5	1300	22	4" inlet
HD11Qx8	1200	22	1600	30	6" inlet 4" outlet

Larger capacities to 300 m³/hr are offered with our twin screw pumps

kW stated are at 3 bars & 120-180°C
960 rev/min models are normally fitted with double helical gears and mechanical seals.

Heating Methods

Albany supply a modular pump suitable for:

- Oil or steam heating
- Electric heating using 110V or 220V cartridge heaters on single phase supply. Up to 1200 watts is available to keep pump at 120° with a thermostat.
- Engine driven pumps can be heated by the exhaust gases. The hot gas can be passed through the pump casing or through a hot box

Sealing

Single or double seals are selected depending on the service temperature. Extra heating is provided on seal type pumps. Seals are protected by high and low temperature controls from heat damage or cold start. Cartridge seals allow easier replacement.

Applications



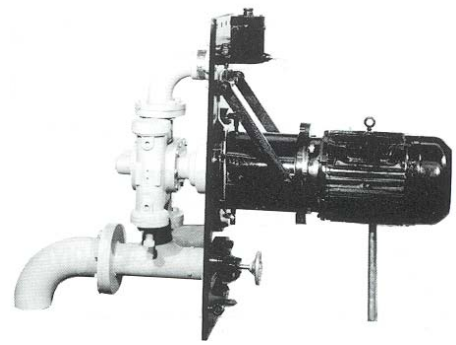
FOR VERTICAL TANKS

This external pump has self draining vertical branches. It gives faster heat up.



FOR HORIZONTAL TANKS

We supply immersed pumps with tank top discharge.



FOR VERTICAL TANKS

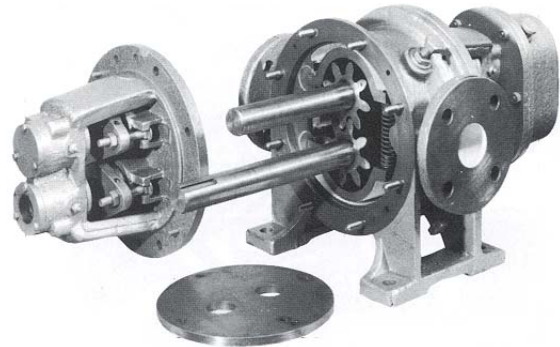
Side immersed pumps do not need heating. Heated mechanical seals seal the pump. Cartridge mounted seals are easy to replace.

Asphalt, Epure, Pitch, Tars, Enamels

ABRASIVE BITUMEN / ASPHALT MIXTURES

(e.g Pipeline Enamel, Trinidad Lake Asphalt, Clay Target mixtures)

Internal bearing pumps with hardened nitride wear parts offer an economical choice on certain applications. Normally external bearing pumps are specified; The Triton abrasive wear pump has been specially designed for use on TLA and is manufactured by our subsidiary company, Albany Standard Pumps of Bradford, W.Yorks. Body wear is usually taken up by adjustable shoes, Wear plates (reversible) take up end face wear. Rotor wear is reduced by the use of timing gears running in an oil bath. Available in a plain or a heated pattern.



Refinery Service API 676 Pumps

Steam or oil heated gear or screw pumps to 300m³/hr. Seals with a steam quench and water cooled bearings can be supplied depending on the service temperature.

AN END TO LEAKING BITUMEN GLANDS

Albany offer an easy to repack bitumen gland which can be fitted to all Albany bitumen pumps. It uses carbon packing which allows heat to leave the gland area thus facilitating either cooling of the gland or quick heating up at start up. It cuts the repacking time to a quarter of that needed for conventional glands at little extra cost.

HOT OIL CENTRIFUGAL PUMPS

Albany manufacture a range of cast steel or cast iron centrifugal pumps to pump process heating fluids or oils at up to 350°C. Mechanical seals or packed glands are available with cooling of the gland area by water if required.

Quality Assurance to
BS EN ISO 9001:2000



Certificate No. **FM 20986**

ALBANY ENGINEERING COMPANY LIMITED, Church Road, Lydney, GLOS GL15 5EQ

Tel: +44 (0) 1594 842275

Fax: +44 (0) 1594 842574

e-mail: sales@albany-pumps.co.uk

www: albany-pumps.co.uk