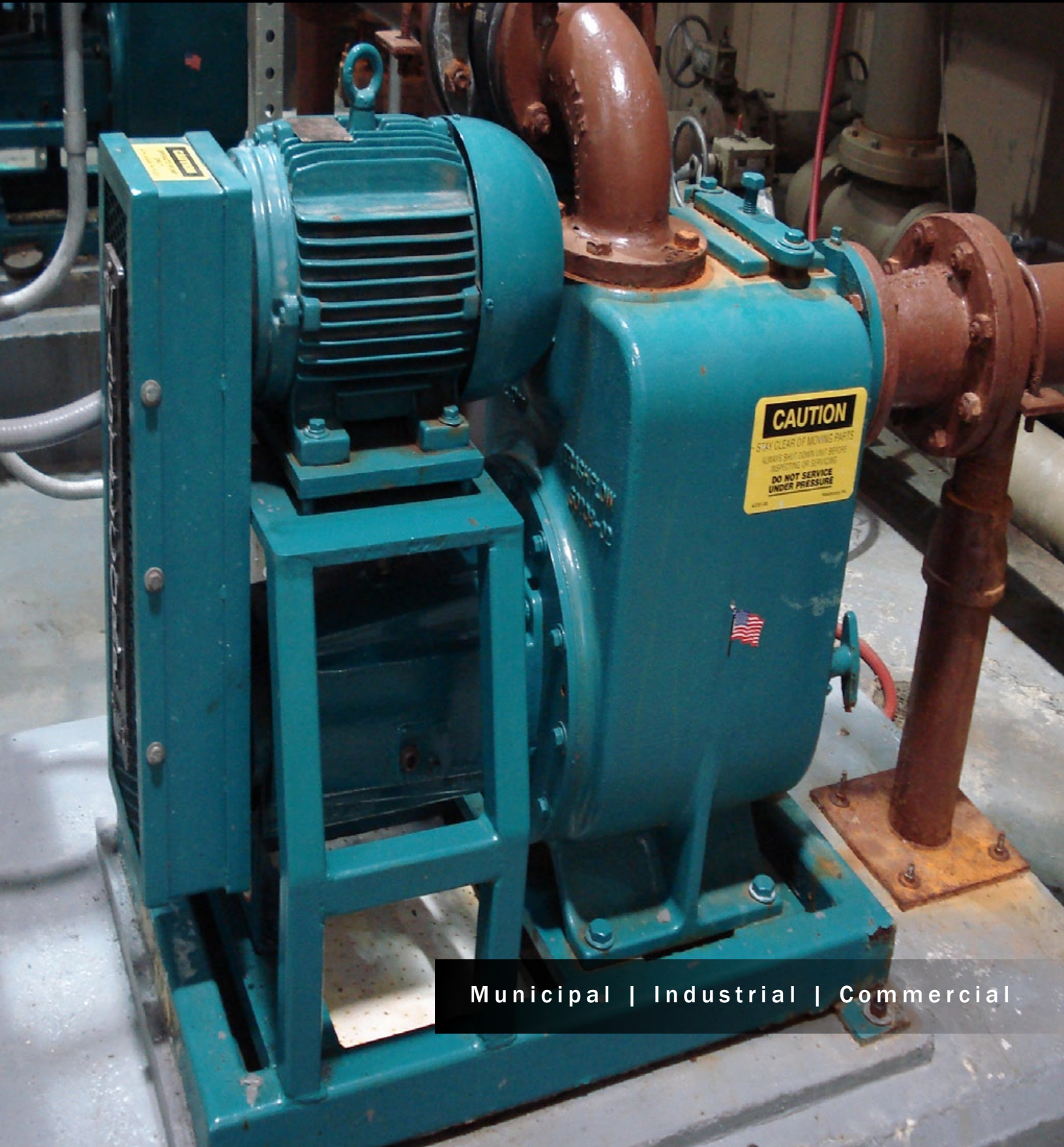




WASTECORP.
Pumps

Trash-Flow® Centrifugal Pumps

EMPOWERING A NEW GENERATION OF CENTRIFUGAL PUMPS



Municipal | Industrial | Commercial

New Installation or Direct Replacement The Wastecorp Trash-Flow® is Your Answer.

Wastecorp Trash-Flow self priming centrifugal pump products are ideal for a multitude of solids handling applications and now replace almost any self priming pump make with no piping changes. The Trash-Flow is available in 3" (75 mm), 4" (100 mm), 6" (150 mm), 8" (200 mm) and 10" (250 mm) sizes with maximum capacity to 3300 GPM (208.2 lps). Choose from standard cast iron designs or stainless steel and engine driven mobile pump models for outdoor applications.



All the Best Features In the Industry Available in one Pump – The Trash-Flow.

With its large volute design and superior re-priming capabilities, this Trash-Flow series is designed for municipal and industrial solids handling up to 3" (76 mm). Plus, pump models are available with stainless steel internals for food processing applications.

Easy Maintenance, Long Life cycles

Trash-Flow components can be adjusted and replaced to renew pump performance. No disassembly or shim requirements are necessary.

Back Pull-Out Design

The Trash-Flow's back pull-out design enables maintenance staff to quickly service the pump safely without the need for special tools.

Clean-out Port

Operators can easily inspect and service the clean-out without draining the pump casing.

Quick Delivery Schedule

With our state-of-the-art manufacturing process, Wastecorp is able to conquer the 16-20 week delivery schedule that has become common at other manufacturers. On average Wastecorp Trash-Flow products are available in five to six weeks for standard self priming products.



Wastecorp Trash-Flow® Quick Facts

- Capacities to 3500 GPM
- Heads to 135' (41.2 m)
- Temperatures to 160° F (71° C)
- Pressures to 85 PSIG (586 kPa)
- Suction lift to 25' (7.6 m)
- Spherical solids to 3 inches (76 mm)

Applications

Trash-Flow pumps are designed for a wide range of wastewater and solids handling applications. With available impeller options and stainless steel self priming centrifugal models, there's no job too tough for Wastecorp's Trash-

Flow. From industrial treatment plants, municipal solids handling, settling ponds, remote sewage lift stations, on-site treatment and more, Trash-Flow's are known for years of consistent and reliable pumping.

Trash-Flow pumps are ideal for almost any municipal or industrial application



Paper and wood

Clarifier scum, drainage sumps, underflow to dewatering, coal pile run off, broke pits, paper machine floor sump, white water service, black liquor sump.



Municipal Solids Handling

Solids handling applications including wastewater treatment, slurries, sump and more.



Chemical | Petrochemical

Detergent cakes, coke slurries, refinery mud, oil waste, lead oxide slurry, storm drains, sulfur froth.



Mining

Acid mine water, coal and sand washing, truck washdown, sand and gravel silt ponds, mine dewatering, mill scale runoff, cutting oil transfer.



Automotive | Steel Factories

Oil washdown, paint overspray, chrome plating slurries, mill scale, glass and plastic, roll grinder coolant.



Theme Parks and Zoos

Wastewater pump house, themed attractions, general water sanitation services, lagoon water circulation.



Orchards | Wineries

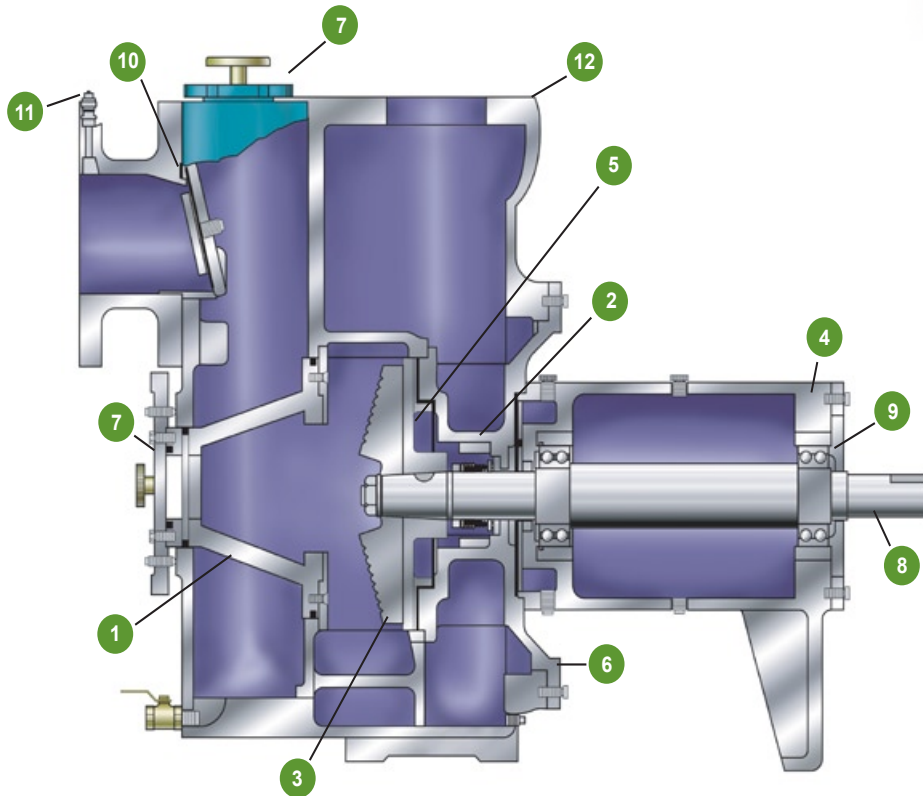
From raw juices and high pulp content applications to wastewater, Trash-Flow pumps are ideal for wineries and orchard pumping applications.



Food Processing

Blood, fleshings, pork, beef, poultry, fat, fish, potato, all vegetables, fish farming, aquaculture applications.

Why a Trash-Flow® ?



1 PATENTED WASTECORP ADJUSTABLE WEAR PLATE CARRIER (U.S. Patent 6,599,086)

This unique design allows precise adjustment of impeller to wear ring tolerance. The Trash-Flow's design reduces maintenance costs and can improve overall pump efficiency without shimming or premature wear plate replacement.

2 UNIQUE AXIAL RIB DESIGN

Axial ribs located on the inner stuffing box, prevent entrapment of solids and vapor near the mechanical seal.

3 SOLIDS HANDLING IMPELLER

Concentrically designed and computer-balanced impellers are engineered to pass solids in excess of 50% of the inlet hole.

4 ENLARGED BEARING HOUSING

The oversized bearing housing gives unsurpassed shaft support, reducing roller bearing fatigue.

5 REAR PUMP OUT VANES

Rear pump out vanes greatly reduce axial thrust and pressure increases pump performance and overall efficiency.

6 QUICK CLEAN DESIGN

The back-pull design allows for removal of full rotation assembly without disturbing plumbing. It also permits replacement of wear plate and access for casing inspection.

7 ENLARGED CLEAN OUT PORT

Large sized clean-out holes allow for inspection of inner casing by a simple twist of the hand knobs (no special tools required).

8 STAINLESS STEEL SHAFTING MATERIAL

The enlarged shaft reduces deflection and shock loads at the mechanical seal to less than 0.003.

9 CORROSION RESISTANT ROLLER BEARINGS

The oversized ball bearings are oil lubricated, requiring no external cooling and are designed to operate for a minimum of 120,000 hours without replacement.

10 REPLACEABLE SUCTION FLAPPER

The heavy duty flapper valve is easily accessible for general inspection.

11 FLANGED GAUGE CONNECTIONS

Standard gauge connections in accordance to ANSI standards allow for recording and monitoring suction and discharge pressures with the use of Wastecorp's selection of optional pressure gauges.

12 CORROSION RESISTANT CASING

All Trash-Flow® pumps are designed with thick walled casings to withstand abrasive sludge and slurries. Most models are available in a variety of castable materials, although

Proven Track Record

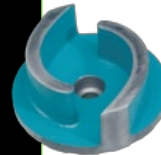
Wastecorp Trash-Flow pumps are known throughout the pump industry for their long life cycles and high performance designs.

Removable Rotating Assembly



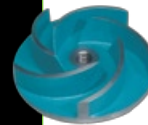
Experience less downtime and maintenance hassles with the Trash-Flow's removable rotating assembly. The pump volute and piping are not disturbed during maintenance.

Solids Handling Impellers



Trash-Flow pumps feature our standard premium two-vane solids handling impellers with solids handling capabilities up to 3" (75mm).

Optional Multi-vane Impeller



Multi-vane impellers are available for low solids content applications or higher head pumping jobs. These impellers optimize suction lift and flow rates.

Extended Life Mechanical Seals



Wastecorp's tungsten titanium carbide mechanical seals are designed for the harsh pumping conditions in today's municipal and industrial solids handling jobs.

Operator Friendly Back Pull-Out



The Trash-Flow's power end is completely outside of the pump casing allowing for easy removal.

Optional Suction and Discharge Gauges



Monitor operating pressure easily with Wastecorp's optional suction and discharge gauges.

Trash-Flow®

Self Priming Centrifugal Pumps Products

Sizes	Max. Capacity	Max. Head	Max. temp	Max. Solids
3", 4", 6", 8", 10" (75 mm, 100 mm, 150, mm 200 mm, 250 mm)	3500 GPM (220 lps)	135' (41.2 m)	160 °F (71 °C)	3" (75 mm)



3"
Trash-Flow

4"
Trash-Flow

6"
Trash-Flow

8"
Trash-Flow

10"
Trash-Flow

Materials of Construction

Main Casing	A48CL30
Impeller	A60-40-18
Wear Plate	SAE1020
Cover Plate	A48CL30
Bearing Housing	A48CL30
Seal Plate	A48CL30
Flapper Valve	Neoprene
Shaft Sleeve	ANSI 4140HT
Inlet/Outlet Flanges	A48CL30
Gaskets	Buna
Impeller Shaft	ANSI 4140HT
Mechanical Seal	Oil-Lubricated Double Floating, Casing and spring SS316, O'rings in Buna & Viton, Faces in Titanium and Tungsten Carbide



Removable Coverplate

Easily access the pump interior with the Trash-Flow's standard removable coverplate. No special tools are required for removal.

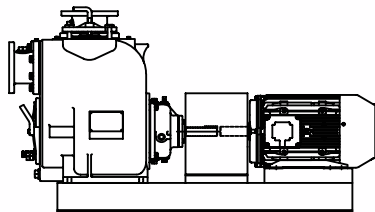


Quick Prime Feature

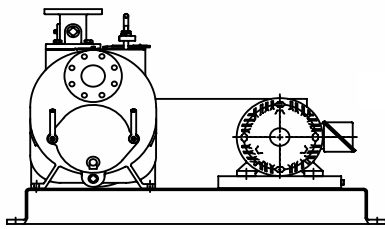
The Trash-Flow's quick prime chamber can be accessed easily and provides the connection for the optional vac assist feature.

Multiple Configuration Options

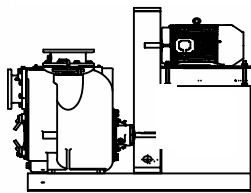
Trash-Flow self priming centrifugal pump are available in standard, direct flex coupled, horizontal belt drive, vertical belt drive or as part of a packaged pump station.



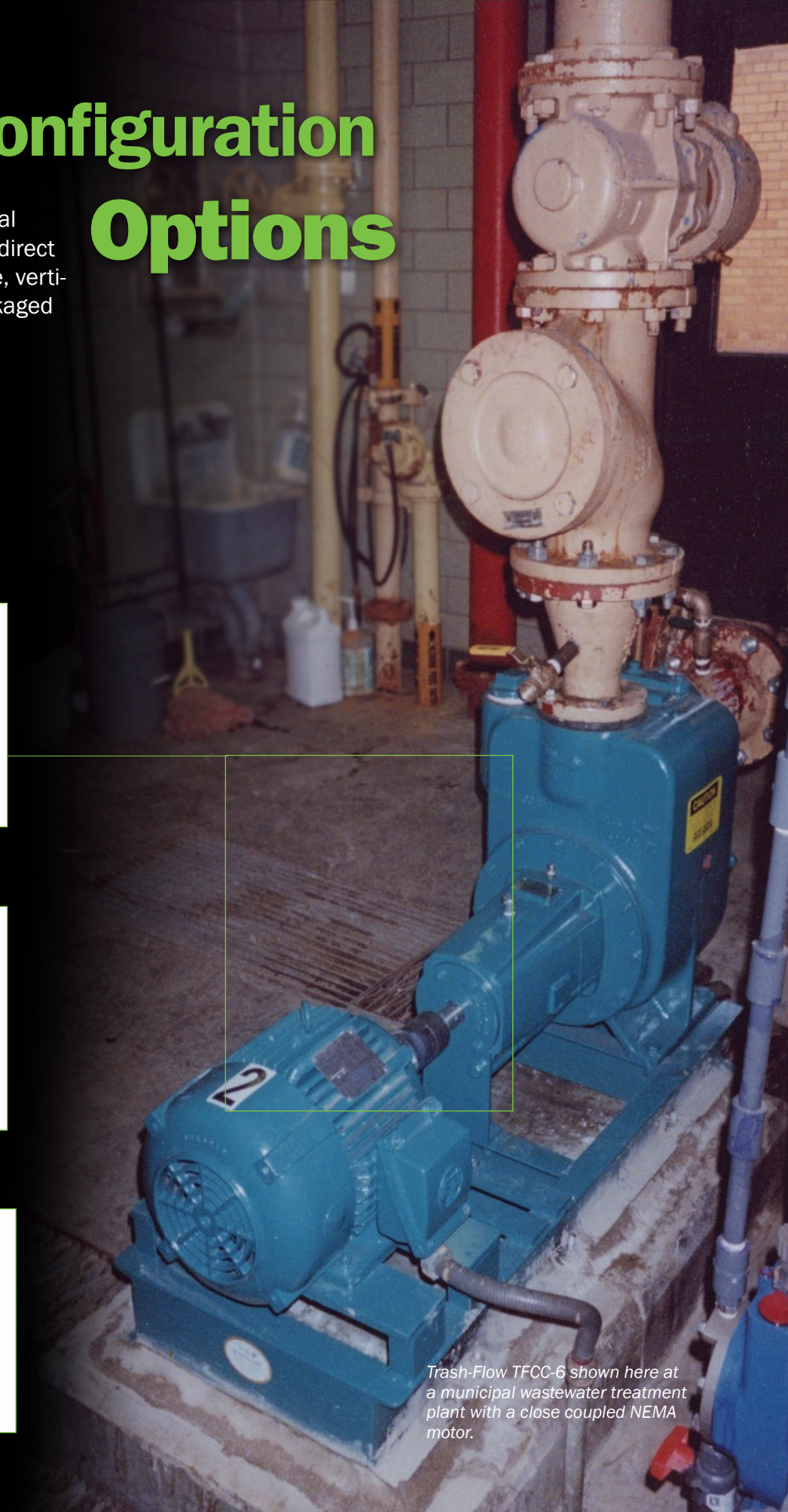
Direct Flex Coupled



Horizontal Belt Drive



Vertical Belt Drive



Trash-Flow TFCC-6 shown here at a municipal wastewater treatment plant with a close coupled NEMA motor.

Trash-Flow® Engine Driven Series

When it comes to tough fluid handling applications around your work site, Trash-Flow engine driven pumps provide self priming pumping power for many municipal and industrial applications. Select from trailer mounted, skid mounted or the Trash-Flow Husher model for pumping in residential areas

All diesel and gasoline units feature a large capacity fuel tank allowing for 24 hour continuous operation without refueling. When it comes to engine selection,

Wastecorp selects high performance and reputable brands, proven to enhance fluid transfer of all kinds. Additional features include the Trash-Flow's patented adjustable wear plate carrier, large clean out port for easy maintenance, premium grade silicon carbide seals and your choice of impeller.

Trash-Flow engine driven pumps include a five year limited protection plan giving you complete confidence that Wastecorp Pumps is with you every step of the way.



Trash-Flow Trailer Mounted Options

- 3" (75 mm), to 10" (250 mm) models available
- Maximum capacity to 3300 GPM (208.2 lps)
- Standard and compact belt driven configurations



Trash-Flow Skid Mounted

- Available dry prime feature
- Designed for drainage, industrial slurries, sewage and more
- Engines available up to 85 hp



Trash-Flow Husher™ Silent Pumping Series

- Fully Enclosed acousitical canopy hut
- Noise levels below 70 dBa
- Trailer or skid mounted (shown) models available

Trash-Flow® Engine Driven Features



Select up to 85 hp gas or diesel engines from Premium engine manufacturers.



3" forged eye hook with safety chain, complete with front and rear swivel jacks.



Vacuum assist option available for dry priming of pump.



Lifting bail for easy mobility around your work area.

Portable Pumping Applications Made Easy.



A wide variety of accessories and optional equipment are available for your Trash-Flow pump. Ask your Wastecorp representative for more information.



Trash-Flow® Equipment / Accessories

- Check valve
- Casing heater
- Suction and discharge gauges
- Spare parts kit
- Pump maintenance kit
- John Crane mechanical seals
- Optional elastomers and materials including EPDM, neoprene, Viton® and more.
- John Deere®, CAT®, engines

Leadership in Pump Manufacturing, Parts and Service



Pump Repair Kits and parts for Wastecorp pumps and other makes.



Plunger Pumps Since 1928



Submersible Sewage Pumps



Mud-Sucker Diaphragm Pumps



End Suction Centrifugal Pumps



In line Circulation Pumps



Horizontal Split Case Pumps

More Pumps To Explore.



TFX

Commercial and Residential Trash Pumps

Trash-Flow TFX contractor pumps serve the needs of contractors, homeowners and can be used as a back-up pump for any heavy duty application. You have the choice of 2" (50 mm), 3" (75 mm) and 4" (100 mm) models with capacities to 425 GPM (27 lps). Select from gas, diesel and single phase or three phase electric models.



ANSI/ISO Process Pumps

North America: 1-888-829-2783

Fax: 1-888-883-3320

Worldwide: +1-201-445-2882

Fax: +1-201-445-3252

E-mail: info@wastecorp.com

Internet: www.wastecorp.com

Contact:



WASTECORP.
Pumps[®]

PUMPS DESIGNED FOR ONE APPLICATION. YOURS.

Specifications, literature and illustrative material are accurate at the time of publication but are subject to change without notice.

Illustrations may include optional equipment and accessories and may not include all standard equipment. Trash-Flow, Wastecorp and globes are trademarks of WPCI Environmental Brands /Wastecorp Pumps. Wastecorp Pumps is the exclusive manufacturer of these brands. Marks are protected in North America and worldwide.

© 2009 WPCI. All rights reserved. New York, NY 10021

NYC/Brookl.Djs 5/09. Lithographed in the United States of America

For a complete engineering specification on CD-ROM or hardcopy contact Wastecorp Pumps at 1.888.829.2783 or by E-mail: info@wastecorp.com.

Also on the web at <http://www.wastecorp.com>